



PARTS CATALOGUE

FZ150 (3C14) INDONESIA



1J3C1-460E1

()

FZ150
PARTS CATALOGUE
©2009 by Yamaha Motor Co., Ltd.
1st edition, November 2009
All rights reserved.
Any reprinting or unauthorized use
without the written permission of
Yamaha Motor Co., Ltd.
is expressly prohibited.
Printed in Japan.

FOREWORD

This Parts Catalogue is related to the parts for the model(s) on the cover page. When you are ordering replacement parts, please refer to this Parts Catalogue and quote both part numbers and part names correctly.

1. Modifications or additions which have been made after the issue of the Parts Catalogue will be announced in the Parts News.
It is advisable that you make the necessary corrections to the Parts Catalogue according to the Parts News.

2. Abbreviations

The following abbreviations are used in this Parts Catalogue.

“UR” Use specified parts number.

“UN” Use as many as needed.

“AP” Alternate Parts

“LM” Locally Made (Parts need to be ordered locally)

“F#” Frame No. (Applicable machine No.)

“O/S” Over Size

3. The number of components for assembly

- Parts, which are to be supplied in an assembly, are listed with a dot (.) in front of the part name as shown below.
- The numeral appearing to the right of each component part indicates the quantity of parts for each assembly unit.

PART NO.	DESCRIPTION	Q'TY	REMARKS
2F5-83310-60	FRONT FLASHER LIGHT ASSY	2	
115-83311-60	.BULB (6V-18W)	1	

4. Applicable colours of graphics are represented in the “REMARKS” as shown below.

PART NO.	DESCRIPTION	Q'TY	REMARKS
2N4-24110-00-X5	FUEL TANK COMP.	2	MXR
3J1-24240-10	.GRAPHIC, FUEL TANK	1	FOR MXR

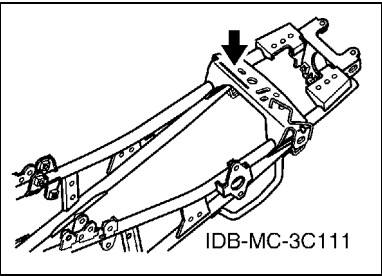
5. Note that the illustrations for reference in finding parts numbers are not to be used for assembling. When assembling, please use the applicable service manual.

6. The asterisk (*) before a reference number indicates modified items after the first edition.

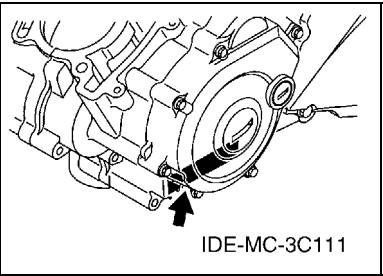
FOREWORD

7. Applicable Serial No.

Frame Serial No.



Engine Serial No.



8. Applicable Colour Code (The (*) mark shows Model colour.)

Abbreviation	Colour Name	Colour Code
BIB2	BLUISH BLACK 2	007B
DBNM8(*)	DARK BLUISH GRAY METALLIC 8	0919
DRMK(*)	DEEP RED METALLIC K	0918
S8	SILVER 8	0895
SMX(*)	BLACK METALLIC X	0903
YB	YAMAHA BLACK	0033

9. Applicable Starting Serial No.

Frame Serial No.

Serial No.	Name Of Q'ty Column	Model Code

Engine Serial No.

Serial No.	Name Of Q'ty Column	Model Code

CONTENTS

ENGINE

CYLINDER HEAD	1
CRANKSHAFT & PISTON	2
VALVE	4
CAMSHAFT & CHAIN	5
WATER PUMP	6
RADIATOR & HOSE	7
OIL PUMP	8
INTAKE	9
EXHAUST	11
CRANKCASE	12
CRANKCASE COVER 1	13
STARTER	14
STARTER CLUTCH	15
CLUTCH	16
TRANSMISSION	18
SHIFT CAM & FORK	20
SHIFT SHAFT	21

CHASSIS

FRAME	22
FENDER	23
SIDE COVER	24
REAR ARM & SUSPENSION	27
STEERING	28
FRONT FORK	29
FUEL TANK	31
SEAT	33
FRONT WHEEL	34
FRONT BRAKE CALIPER	35
REAR WHEEL	36
STEERING HANDLE & CABLE	38
FRONT MASTER CYLINDER	39
STAND & FOOTREST	40
GENERATOR	42
STARTING MOTOR	43
FLASHER LIGHT	44
METER	45
HEADLIGHT	46
TAILLIGHT	47
HANDLE SWITCH & LEVER	48
ELECTRICAL 1	49

ELECTRICAL 2	50
--------------------	----

INDEX

NUMERICAL INDEX	51
-----------------------	----

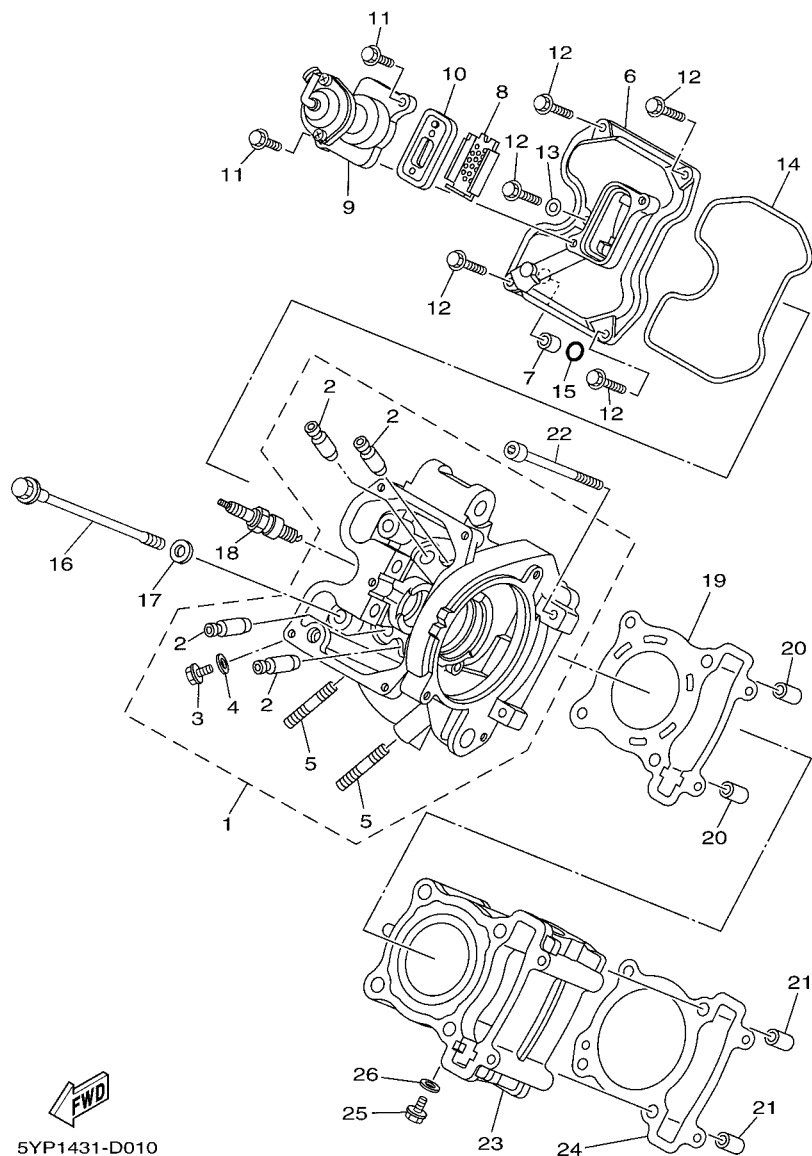


FIG. 1 CYLINDER HEAD

REF. NO.	PART NO.	DESCRIPTION	3C14				REMARKS
1	1S7-E1102-00	CYLINDER HEAD ASSY	1				
2	1S7-E1133-10	.GUIDE, VALVE 1	4				
3	90153-06803	.SCREW, HEXAGON	1				
4	90430-06014	.GASKET	1				
5	95617-08620	.BOLT, STUD	2				
6	1S7-E1191-00	COVER, CYLINDER HEAD 1	1				
7	91811-10005	PIN, DOWEL	1				
8	1S7-E482K-00	PLATE	1				
9	1S7-E4840-00	AIR CUT VALVE ASSY	1				
10	1S7-E4890-00	REED VALVE ASSY	1				
11	95027-06014	BOLT, FLANGE	2				
12	95027-06020	BOLT, FLANGE	5				
13	90430-06014	GASKET	1				
14	1S7-E1193-00	GASKET, HEAD COVER 1	1				
15	93210-11803	O-RING	1				
16	90105-08850	BOLT, FLANGE	4				
17	90201-08609	WASHER, PLATE	4				
18	94700-00872	PLUG, SPARK (NGK CR8E)	1				UR
	94700-00873	PLUG, SPARK (U24ESR-N)	1				UR
19	3C1-E1181-01	GASKET, CYLINDER HEAD 1	1				
20	91810-14809	PIN, DOWEL	2				
21	91810-14809	PIN, DOWEL	2				
22	91317-06100	BOLT	2				
23	3C1-E1311-00	CYLINDER 1	1				
24	1S7-E1351-00	GASKET, CYLINDER	1				
25	90153-06803	SCREW, HEXAGON	1				
26	90430-06014	GASKET	1				

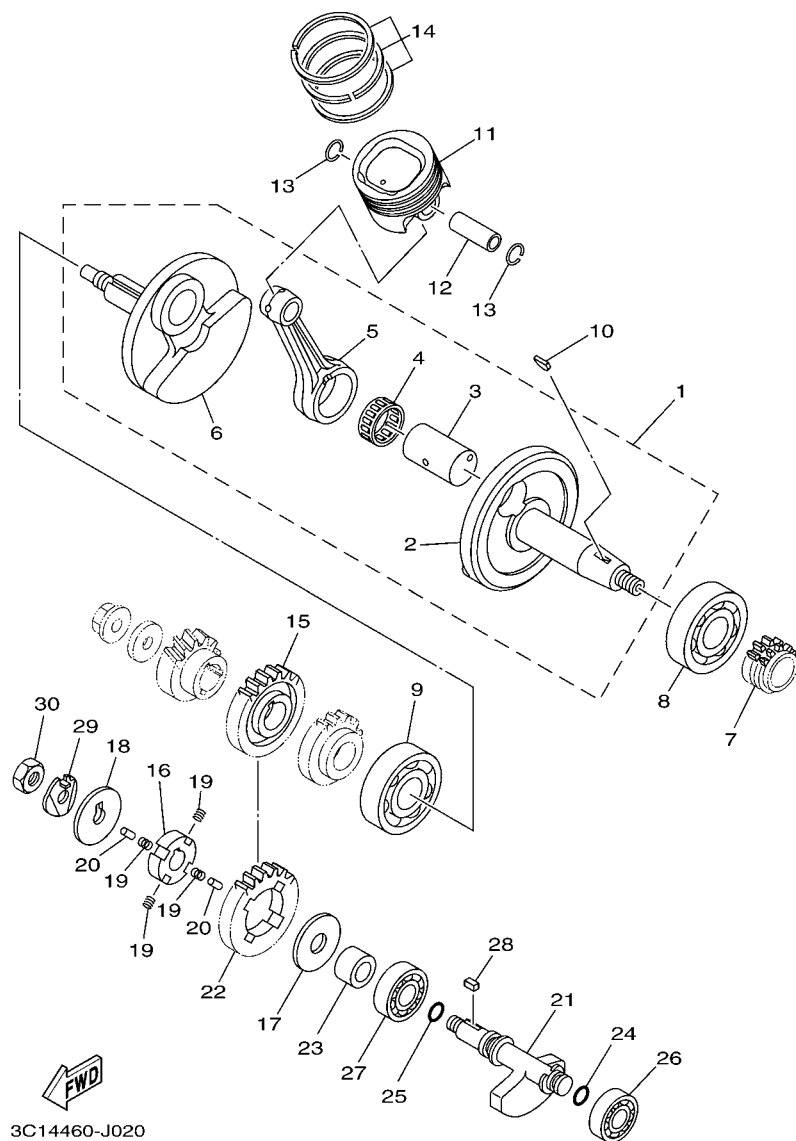


FIG. 2 CRANKSHAFT & PISTON

REF. NO.	PART NO.	DESCRIPTION	3C14				REMARKS
1	3C1-E1400-10	CRANKSHAFT ASSY	1				
2	3C1-E1412-10	.CRANK 1	1				
3	3C1-11681-10	.PIN, CRANK 1	1				
4	93310-528YD	.BEARING	1				
5	3C1-E1651-11	.ROD, CONNECTING	1				
6	3C1-E1422-10	.CRANK 2	1				
7	3C1-E1549-00	SPROCKET, CAM CHAIN	1				
8	93306-305YF	BEARING	1				
9	93306-305X7	BEARING	1				
10	90280-03017	KEY, WOODRUFF	1				
11	3C1-E1631-10	PISTON (STD)	1				
12	3C1-E1633-00	PIN, PISTON	1				
13	93450-16115	CIRCLIP	2				
14	3C1-11603-00	PISTON RING SET (STD)	1				
15	3C1-11536-00	GEAR, DRIVE	1				
16	3C1-E1496-00	BOSS, BUFFER	1				
17	90201-15821	WASHER, PLATE	1				
18	90214-10800	WASHER, CLAW	1				
19	90501-16800	SPRING, COMPRESSION	4				
20	93604-08800	PIN, DOWEL	2				
21	3C1-E1454-10	WEIGHT 1	1				
22	3C1-11531-00	GEAR, BALANCE WEIGHT	1				
23	90387-15810	COLLAR	1				
24	93210-11805	O-RING	1				
25	93210-13803	O-RING	1				
26	93306-252Y9	BEARING	1				
27	93306-203XK	BEARING	1				

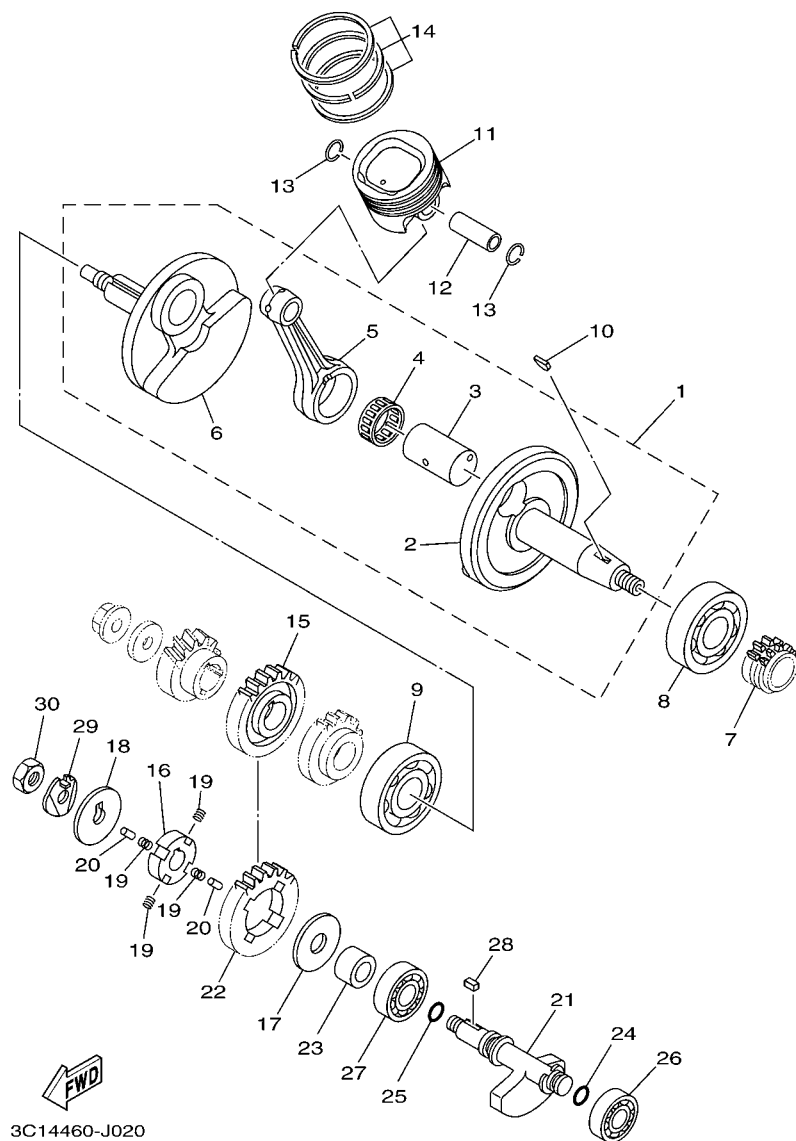
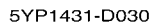
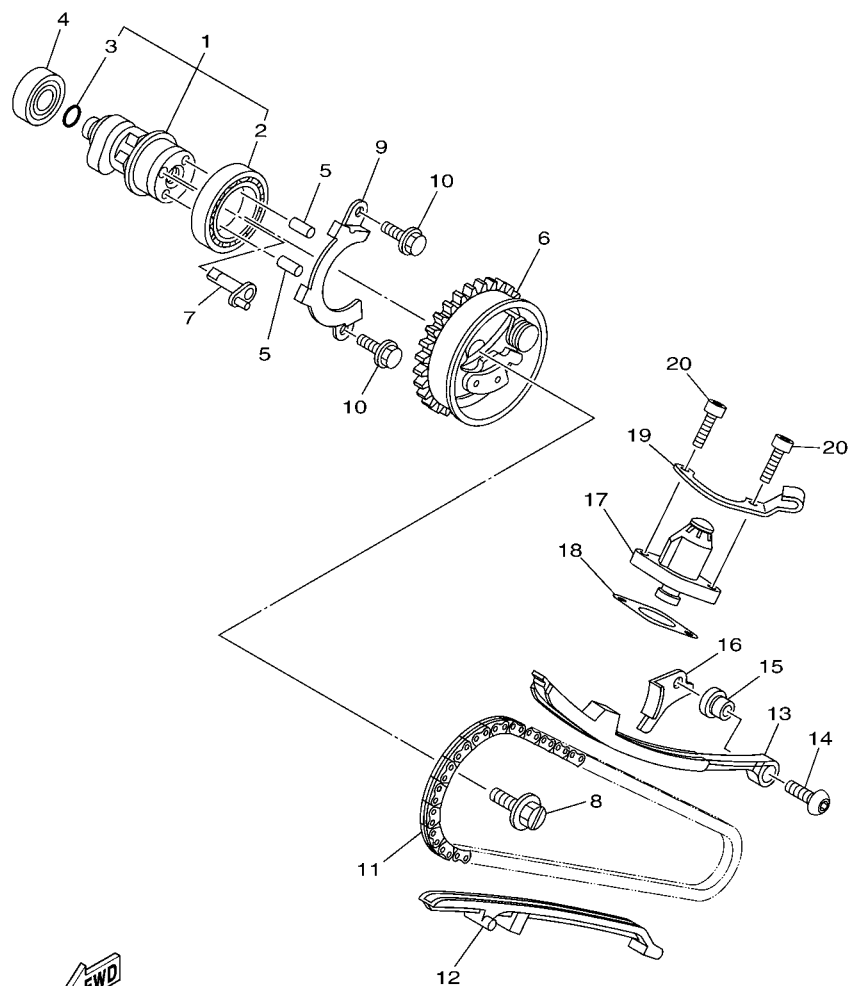


FIG. 2 CRANKSHAFT & PISTON

[illegible]

[illegible]



3C11460-F040

FIG. 4 CAMSHAFT & CHAIN

REF. NO.	PART NO.	DESCRIPTION	3C14				REMARKS
1	3C1-E2170-00	CAMSHAFT ASSY 1	1				
2	93306-906Y4	.BEARING	1				
3	93210-09806	.O-RING	1				
4	93306-001X6	BEARING	1				
5	93605-06800	PIN, DOWEL	2				
6	3C1-E2280-00	DECOMPRESSION ASSY	1				
7	1S7-E2288-00	CAM, DECOMPRESSION	1				
8	5YP-E2157-00	BOLT	1				
9	1S7-E111F-00	PLATE	1				
10	95027-06010	BOLT, FLANGE	2				
11	94568-B3096	CHAIN	1				
12	5YP-E2231-00	GUIDE, STOPPER 1	1				
13	3C1-E2241-00	GUIDE, STOPPER 2	1				
14	90149-06829	SCREW	1				
15	3C1-E5598-00	COLLAR	1				
16	3C1-E2256-00	COVER, CHAIN	1				
17	2P2-E2210-00	TENSIONER ASSY, CAM CHAIN	1				
18	5MX-E2213-01	GASKET, TENSIONER CASE	1				
19	3C1-E5441-00	HOLDER, CLUTCH CABLE	1				
20	91317-06020	BOLT	2				

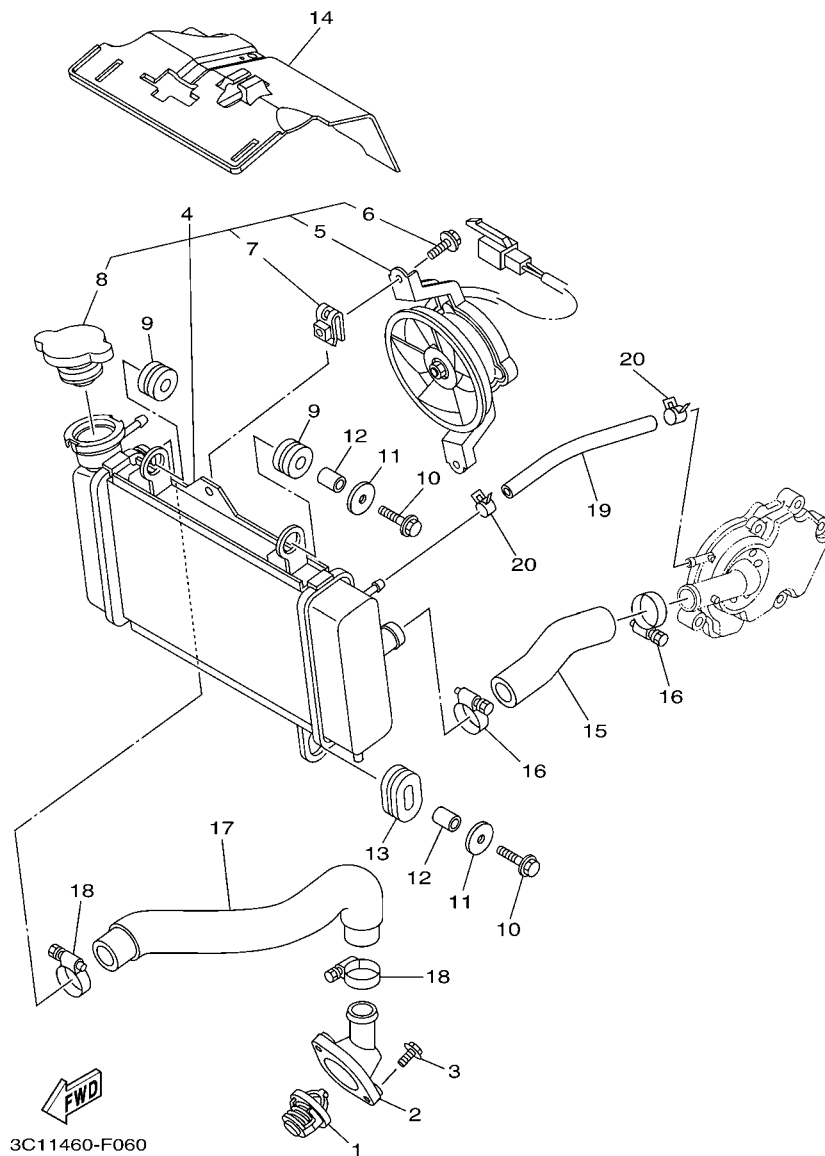


FIG. 6 RADIATOR & HOSE

REF. NO.	PART NO.	DESCRIPTION	3C14				REMARKS
1	5YP-12411-00	THERMOSTAT	1				
2	1S7-E2413-00	COVER, THERMOSTAT	1				
3	95027-06020	BOLT, FLANGE	2				
4	3C1-E240A-10	RADIATOR ASSY	1				
5	1S7-E2405-00	.BLOWER ASSY	1				
6	5YP-E2675-00	.BOLT, BLOWER HOLDING	2				
7	5YP-E2671-00	.NUT 1	2				
8	5YP-E2462-00	.CAP, RADIATOR	1				
9	90480-15363	GROMMET	2				
10	95827-06025	BOLT, FLANGE	2				
11	90201-06072	WASHER, PLATE	2				
12	90387-064W3	COLLAR	2				
13	90480-01803	GROMMET	1				
14	3C1-E2467-00	COVER, RADIATOR	1				
15	3C1-E2481-00	PIPE 1	1				
16	90450-27803	HOSE CLAMP ASSY	2				
17	3C1-E2482-00	PIPE 2	1				
18	90450-27803	HOSE CLAMP ASSY	2				
19	90445-12804	HOSE	1				
20	90467-10805	CLIP	2				

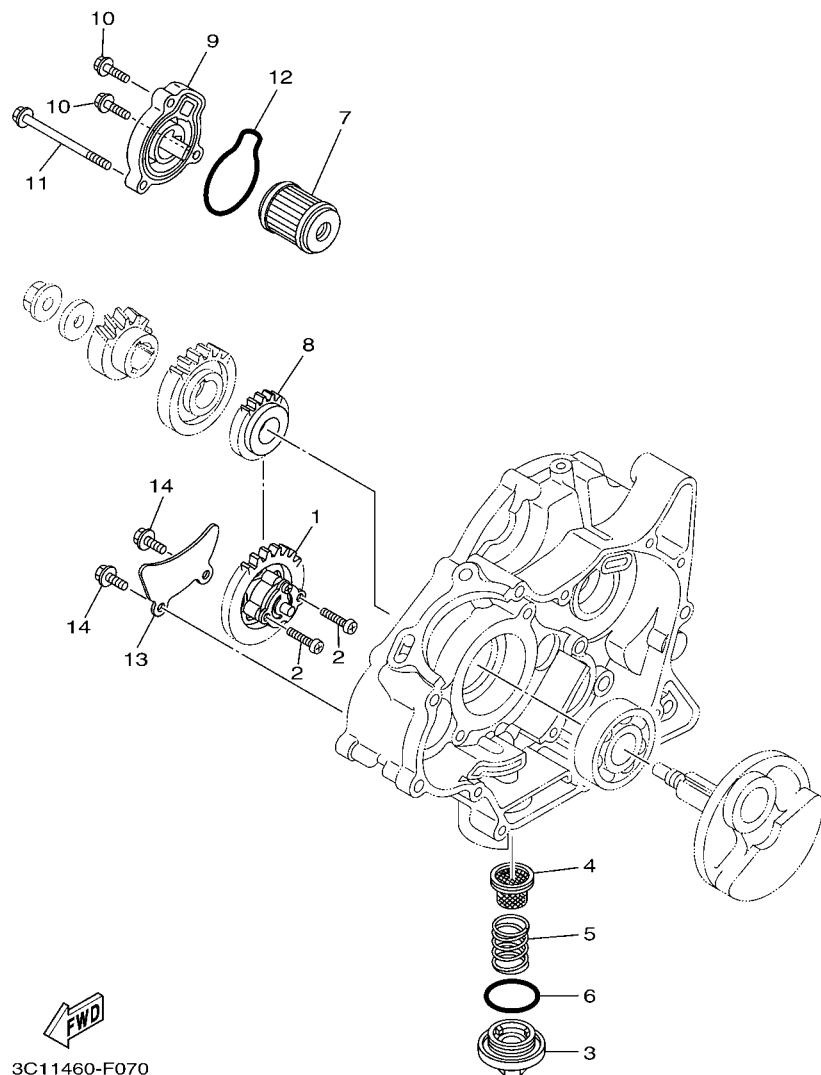


FIG. 7 OIL PUMP

REF. NO.	PART NO.	DESCRIPTION	3C14				REMARKS
1	3C1-E3300-00	OIL PUMP ASSY	1				
2	98507-05025	SCREW, PAN HEAD	2				
3	1S7-E5351-00	PLUG, DRAIN	1				
4	1S7-E3411-00	STRAINER, OIL	1				
5	90501-18576	SPRING, COMPRESSION	1				
6	93210-34802	O-RING	1				
7	1S7-E3440-00	ELEMENT ASSY, OIL CLEANER	1				
8	3C1-E3324-00	GEAR, PUMP DRIVE	1				
9	3C1-E3447-00	COVER, OIL ELEMENT	1				
10	9502L-06020	BOLT, FLANGE	2				
11	9502L-06080	BOLT, FLANGE	1				
12	93210-54805	O-RING	1				
13	3C1-E3327-00	COVER, PUMP GEAR	1				
14	9502L-06012	BOLT, FLANGE	2				

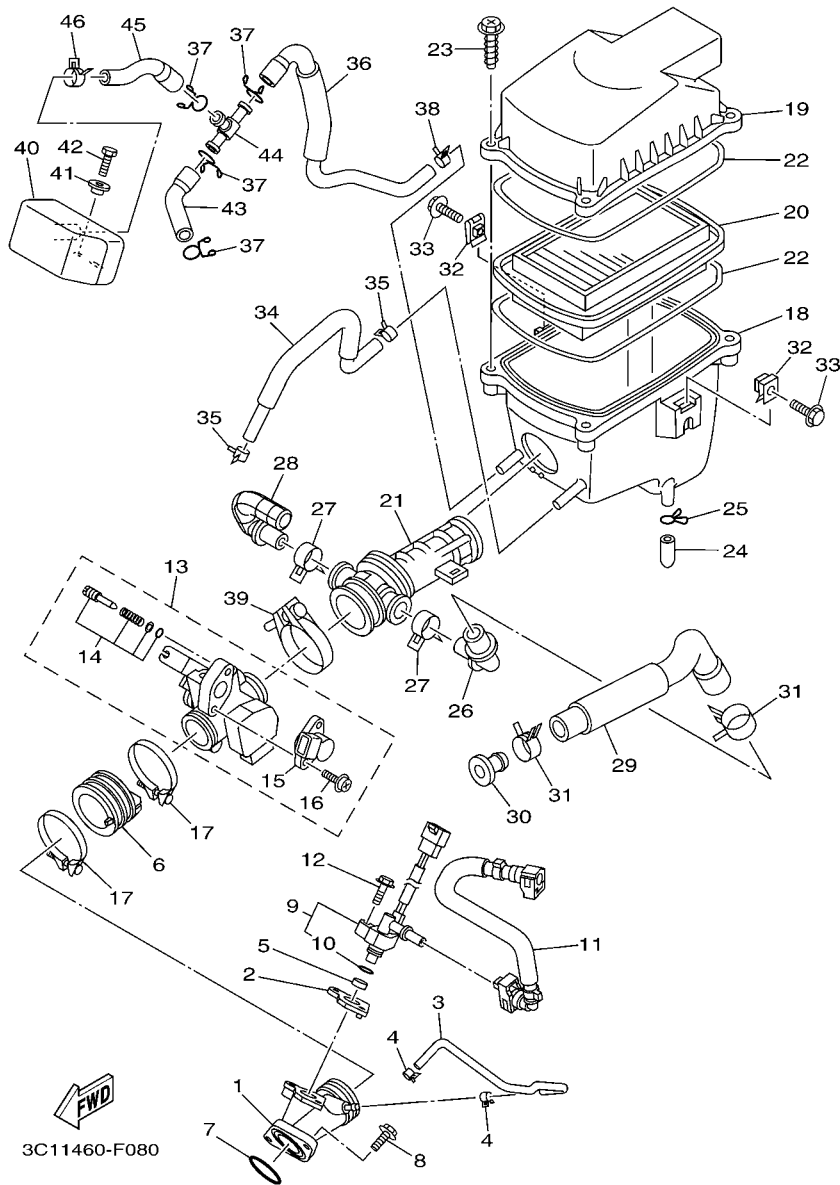


FIG. 8 INTAKE

REF. NO.	PART NO.	DESCRIPTION	3C14				REMARKS
1	3C1-E3585-00	MANIFOLD	1				
2	3C1-E3556-00	GASKET, MANIFOLD	1				
3	3C1-E3542-00	HOSE, VACUUM SENSING 1	1				
4	90467-08092	CLIP	2				
5	90430-09800	GASKET	1				
6	3C1-E3586-00	JOINT, CARBURETOR 1	1				
7	93210-32807	O-RING	1				
8	9502N-06020	BOLT, FLANGE	2				
9	3C1-13770-10	INJECTOR ASSY	1				
10	5CA-14147-00	.O-RING	1				
11	3C1-13971-00	PIPE, FUEL 1	1				
12	95817-06030	BOLT, FLANGE	1				
13	3C1-E3750-00	THROTTLE BODY ASSY	1				
14	5JW-14104-00	.AIR SCREW SET	1				
15	2S5-1410H-00	.FUEL CUT SOLENOID VALVE	1				
16	1S4-14216-00	.SCREW	1				
17	5MX-E3575-01	BAND	2				
18	3C1-E4411-00	CASE, AIR CLEANER 1	1				
19	3C1-E4412-00	CAP, CLEANER CASE 1	1				
20	3C1-E4450-00	ELEMENT ASSY, AIR CLEANER	1				
21	3C1-E4453-00	JOINT, AIR CLEANER 1	1				
22	3C1-E4452-00	SEAL	2				
23	90163-05803	SCREW, TAPPING	4				
24	5TL-E443E-00	PIPE, DRAIN	1				
25	90467-12800	CLIP	1				
26	3C1-E4485-00	PIPE, JOINT	1				
27	90467-20050	CLIP	2				

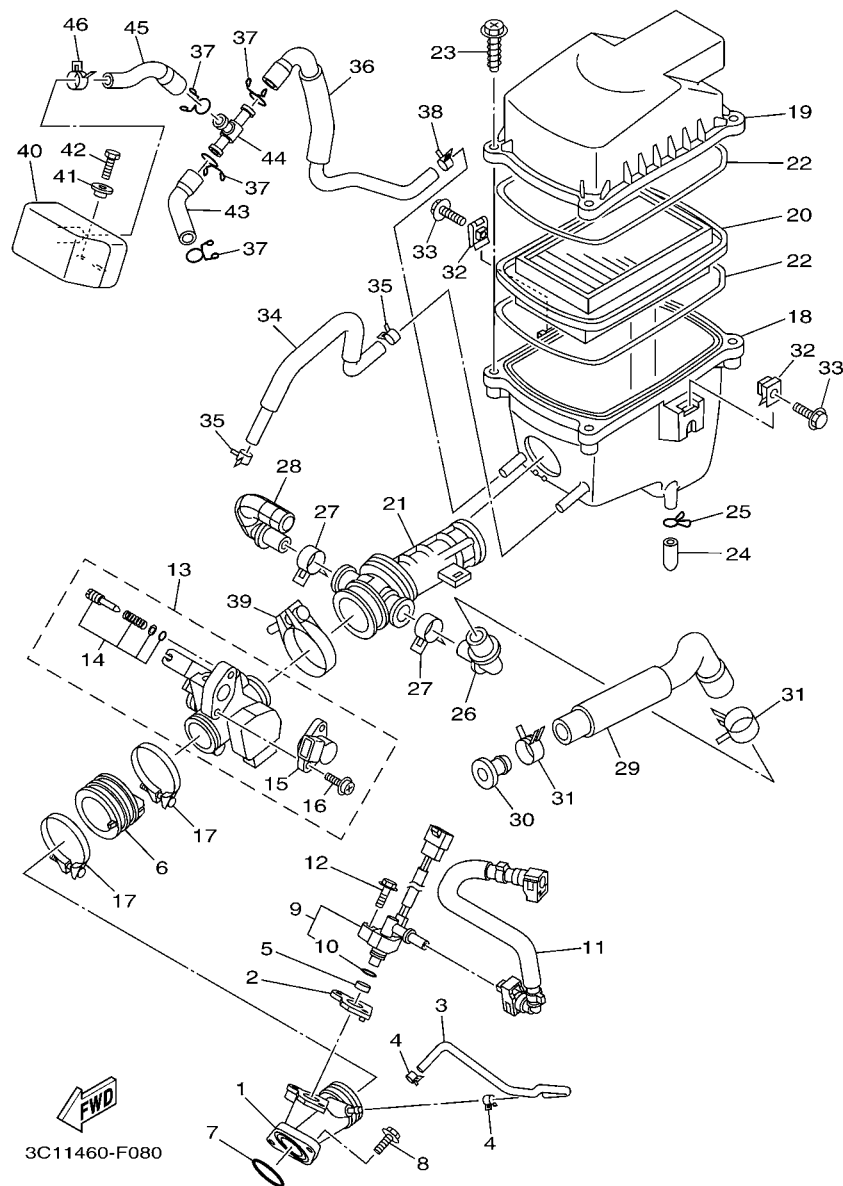
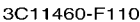


FIG. 8 INTAKE

REF. NO.	PART NO.	DESCRIPTION	3C14				REMARKS
28	3C1-E4419-00	PIPE	1				
29	3C1-E441J-00	PIPE, SILENCER	1				
30	90338-16008	PLUG	1				
31	90467-23801	CLIP	2				
32	90183-06802	NUT, SPRING	2				
33	90119-06051	BOLT, WITH WASHER	2				
34	3C1-E1166-00	PIPE, BREATHER 1	1				
35	90467-13064	CLIP	2				
36	3C1-E4882-00	HOSE, BEND 2	1				
37	90467-15012	CLIP	4				
38	90467-13802	CLIP	1				
39	90450-39802	HOSE CLAMP ASSY	1				
40	3C1-E4877-00	RESONATOR	1				
41	90387-068S1	COLLAR	2				
42	97027-06014	BOLT, HEXAGON	2				
43	3C1-E4881-00	HOSE, BEND 1	1				
44	90413-13800	WAY 3	1				
45	3C1-E4883-00	HOSE, BEND 3	1				
46	90467-16800	CLIP	1				

[illegible]



REF. NO.	PART NO.	DESCRIPTION	3C14				REMARKS
1	3C1-E5411-00	COVER, CRANKCASE 1	1				
2	3C1-E5451-00	GASKET, CRANKCASE COVER 1	1				
3	91810-14809	PIN, DOWEL	2				
4	9502L-06040	BOLT, FLANGE	7				
5	90340-14805	PLUG, STRAIGHT SCREW	1				
6	93210-148F8	O-RING	1				
7	90340-32810	PLUG, STRAIGHT SCREW	1				
8	93210-328G3	O-RING	1				
9	3C1-E5418-00	COVER, CHAIN CASE	1				
10	9502L-06016	BOLT, FLANGE	2				
11	3C1-E5421-00	COVER, CRANKCASE 2	1				
12	3C1-E5461-00	GASKET, CRANKCASE COVER 2	1				
13	91810-14809	PIN, DOWEL	2				
14	9502L-06040	BOLT, FLANGE	4				
15	9502L-06050	BOLT, FLANGE	6				
16	3C1-E5362-00	PLUG, OIL LEVEL	1				
17	93210-198F9	O-RING	1				
18	93101-10843	OIL SEAL	1				
19	9502L-06090	BOLT, FLANGE	1				

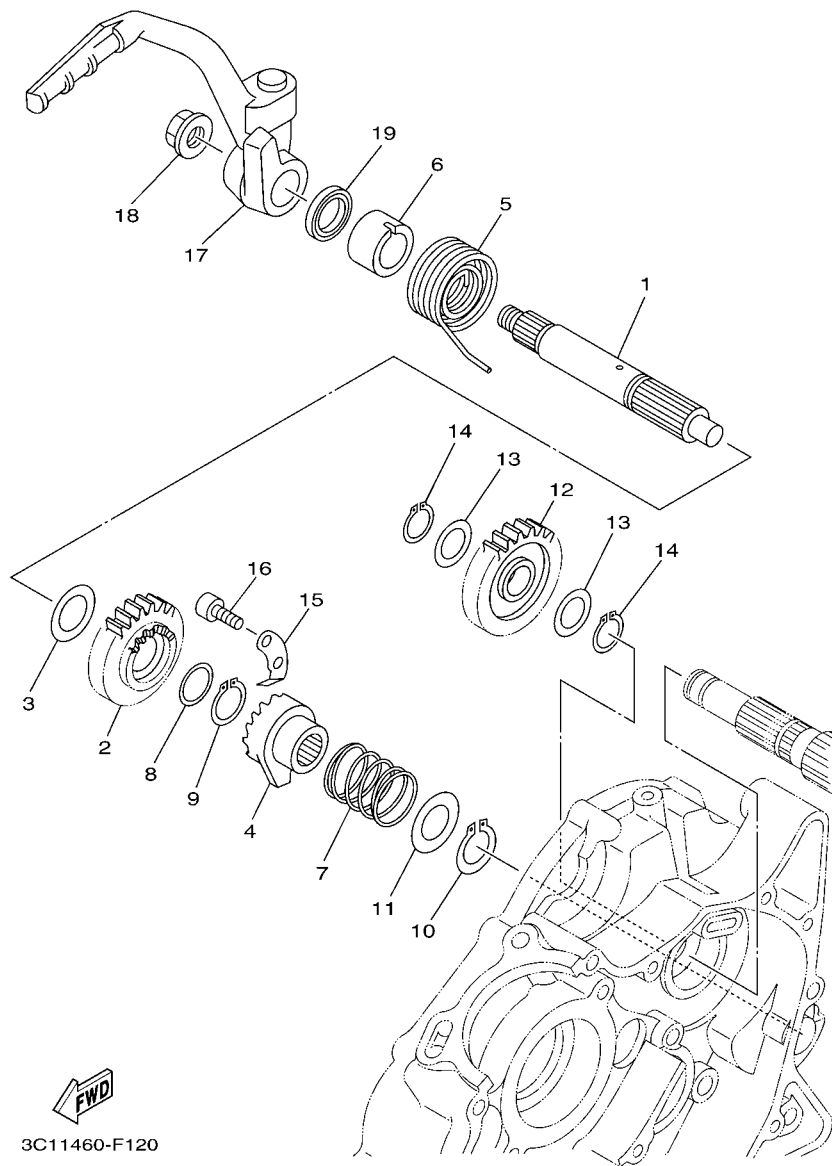


FIG. 12 STARTER

REF. NO.	PART NO.	DESCRIPTION	3C14				REMARKS
1	3C1-E5661-00	AXLE, KICK	1				
2	3C1-E5641-00	GEAR, KICK	1				
3	90201-20815	WASHER, PLATE	1				
4	3C1-E5671-00	WHEEL, RATCHET	1				
5	90508-26803	SPRING, TORSION	1				
6	3C1-E5666-00	SPACER	1				
7	3C1-E5767-00	SPRING	1				
8	90201-20685	WASHER, PLATE (T=0.5)	1				
9	93410-20038	CIRCLIP	1				
10	99009-19400	CIRCLIP	1				
11	90201-19800	WASHER, PLATE	1				
12	3C1-E5651-00	GEAR, KICK IDLE	1				
13	90201-175F6	WASHER, PLATE	2				
14	99009-17400	CIRCLIP	2				
15	3C1-E5674-00	GUIDE, RATCHET WHEEL	1				
16	91317-06016	BOLT	2				
17	3C1-E5620-10	KICK CRANK ASSY	1				
18	90179-12802	NUT	1				
19	93109-20800	OIL SEAL	1				



REF. NO.	PART NO.	DESCRIPTION	3C14				REMARKS
1	3C1-E5514-00	GEAR 2	1				
2	3C1-E5521-00	SHAFT 1	1				
3	90201-105E8	WASHER, PLATE	1				
4	99009-10400	CIRCLIP	1				
5	3C1-E5524-00	WHEEL, STARTER	1				
6	93310-325X1	BEARING	1				
7	90201-25290	WASHER, PLATE	1				
8	5YP-E5580-00	STARTER CLUTCH OUTER ASSY	1				
9	5HV-E5583-00	.CAP, STARTER CLUTCH SPRING	3				
10	5YP-E5614-00	.PIN, DOWEL	3				
11	90501-030A0	.SPRING, COMPRESSION	3				
12	91317-06020	BOLT	3				

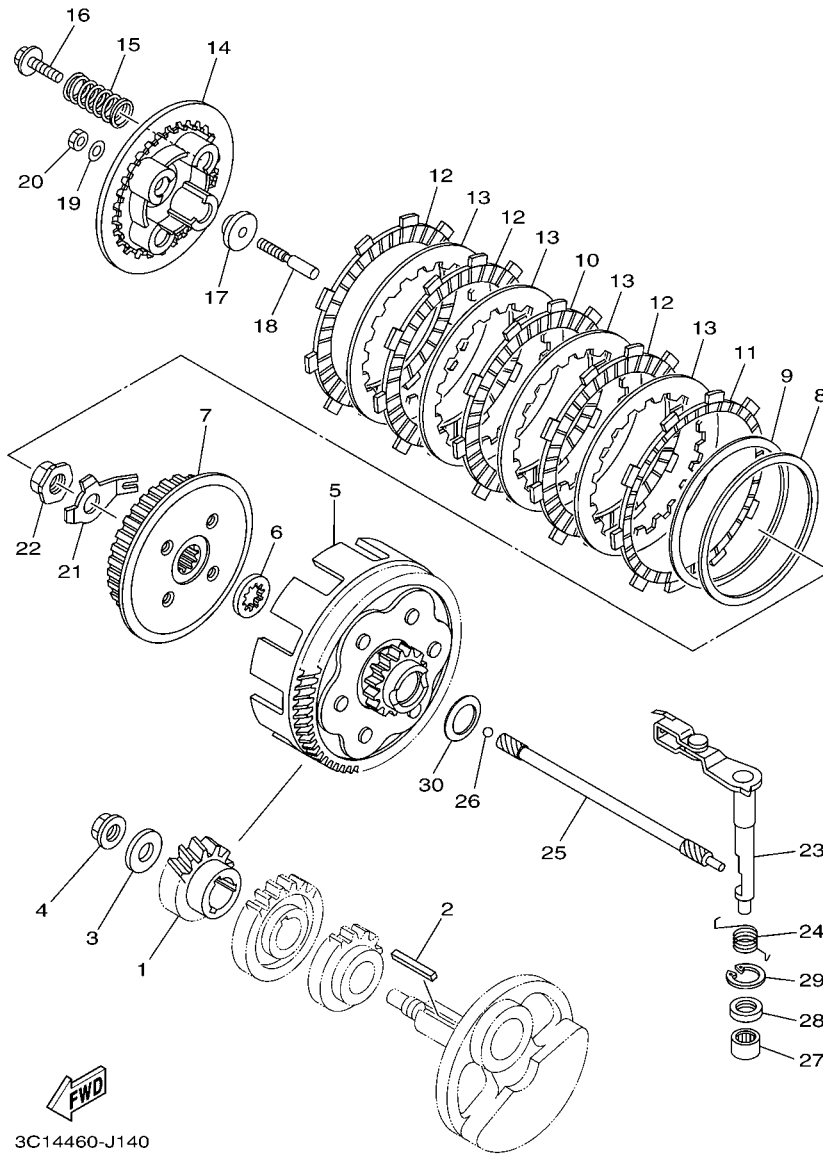


FIG. 14 CLUTCH

REF. NO.	PART NO.	DESCRIPTION	3C14				REMARKS
1	3C1-E6111-00	GEAR, PRIMARY DRIVE	1				
2	3C1-16193-00	KEY, FEATHER	1				
3	90201-12019	WASHER, PLATE	1				
4	90179-12802	NUT	1				
5	3C1-E6150-00	PRIMARY DRIVEN GEAR COMP.	1				
6	3C1-E6154-00	PLATE, THRUST 1	1				
7	3C1-E6371-00	BOSS, CLUTCH	1				
8	3C1-E6384-00	PLATE, SEAT	1				
9	3C1-E6383-00	SPRING, CLUTCH BOSS	1				
10	3C1-E6307-00	PLATE, FRICTION 3	1				
11	3C1-E6331-00	PLATE, FRICTION 2	1				
12	3C1-E6321-00	PLATE, FRICTION	3				
13	3C1-E6324-00	PLATE, CLUTCH 1	4				
14	3C1-E6351-00	PLATE, PRESSURE 1	1				
15	3C1-E6333-00	SPRING, CLUTCH 1	4				
16	3C1-E6337-00	SCREW, SPRING	4				
17	3C1-E6358-00	PLATE, PUSH	1				
18	3C1-E6356-10	ROD, PUSH 1	1				
19	3C1-E6144-00	WASHER	1				
20	3C1-E6344-00	NUT, ADJUSTING	1				
21	3C1-E6135-00	WASHER, LOCK	1				
22	90179-14001	NUT	1				
23	3C1-E6380-01	PUSH LEVER ASSY	1				
24	3C1-E6345-00	SPRING, RETURN	1				
25	3C1-E6357-10	ROD, PUSH 2	1				
26	93505-16844	BALL	1				
27	93315-112Y8	BEARING	1				

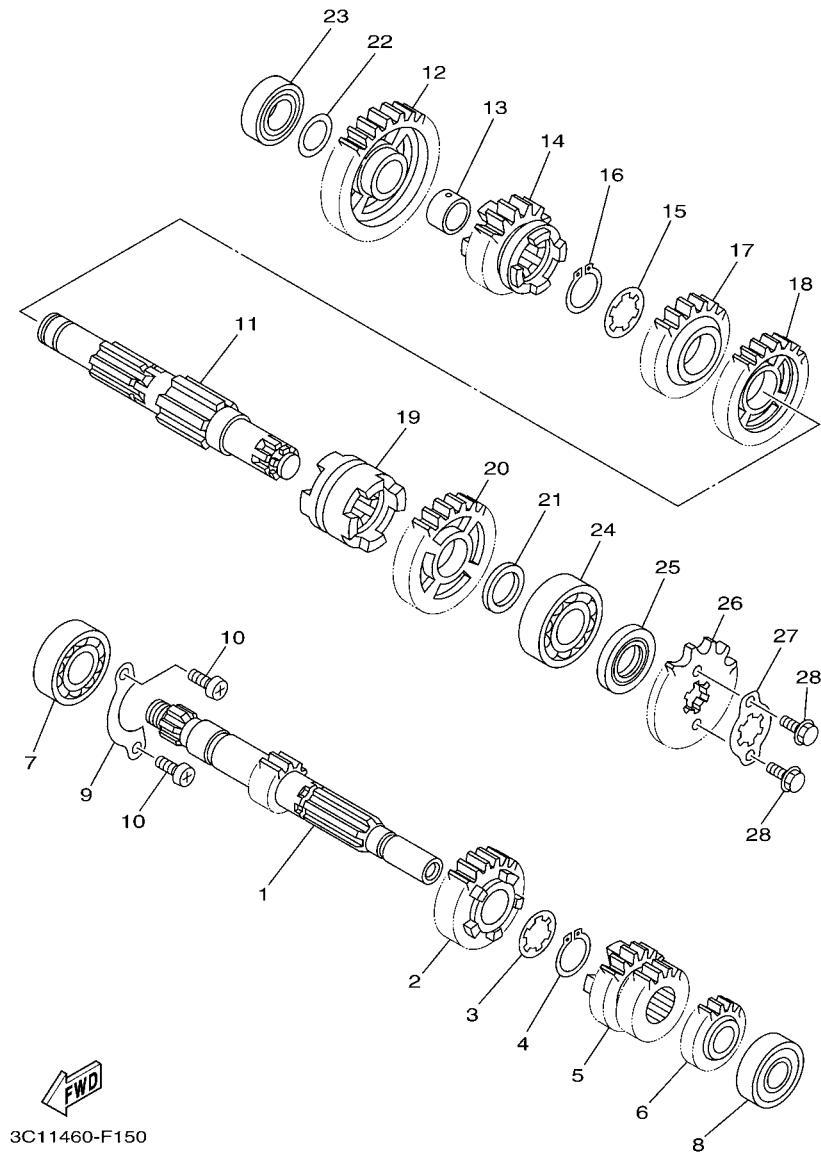


FIG. 15 TRANSMISSION

REF. NO.	PART NO.	DESCRIPTION	3C14				REMARKS
1	3C1-E7411-10	AXLE, MAIN (12T)	1				
2	3C1-E7151-00	GEAR, 5TH PINION (23T)	1				
3	90209-17285	WASHER	1				
4	93410-20038	CIRCLIP	1				
5	3C1-E7131-00	GEAR, 3RD PINION (21T/21T)	1				
6	3C1-E7121-00	GEAR, 2ND PINION (16T)	1				
7	93306-004XR	BEARING	1				
8	93306-252YL	BEARING	1				
9	3C1-E7471-00	PLATE, COVER	1				
10	98517-06012	SCREW, PAN HEAD	2				
11	3C1-E7402-00	DRIVE AXLE ASSY	1				
12	3C1-E7211-00	GEAR, 1ST WHEEL (34T)	1				
13	90387-17804	COLLAR	1				
14	3C1-E7251-00	GEAR, 5TH WHEEL (22T)	1				
15	90209-18208	WASHER	1				
16	93410-22039	CIRCLIP	1				
17	3C1-E7241-00	GEAR, 4TH WHEEL (24T)	1				
18	3C1-E7231-00	GEAR, 3RD WHEEL (30T)	1				
19	3C1-E7285-00	CLUTCH, DOG	1				
20	3C1-E7221-00	GEAR, 2ND WHEEL (30T)	1				
21	90201-20814	WASHER, PLATE	1				
22	90201-173F4	WASHER, PLATE	1				
23	93306-003Y7	BEARING	1				
24	93306-204YS	BEARING	1				
25	93102-20892	OIL SEAL	1				
26	93822-14815	SPROCKET, DRIVE (14T)	1				
27	3C1-E7456-00	HOLDER, SPROCKET	1				



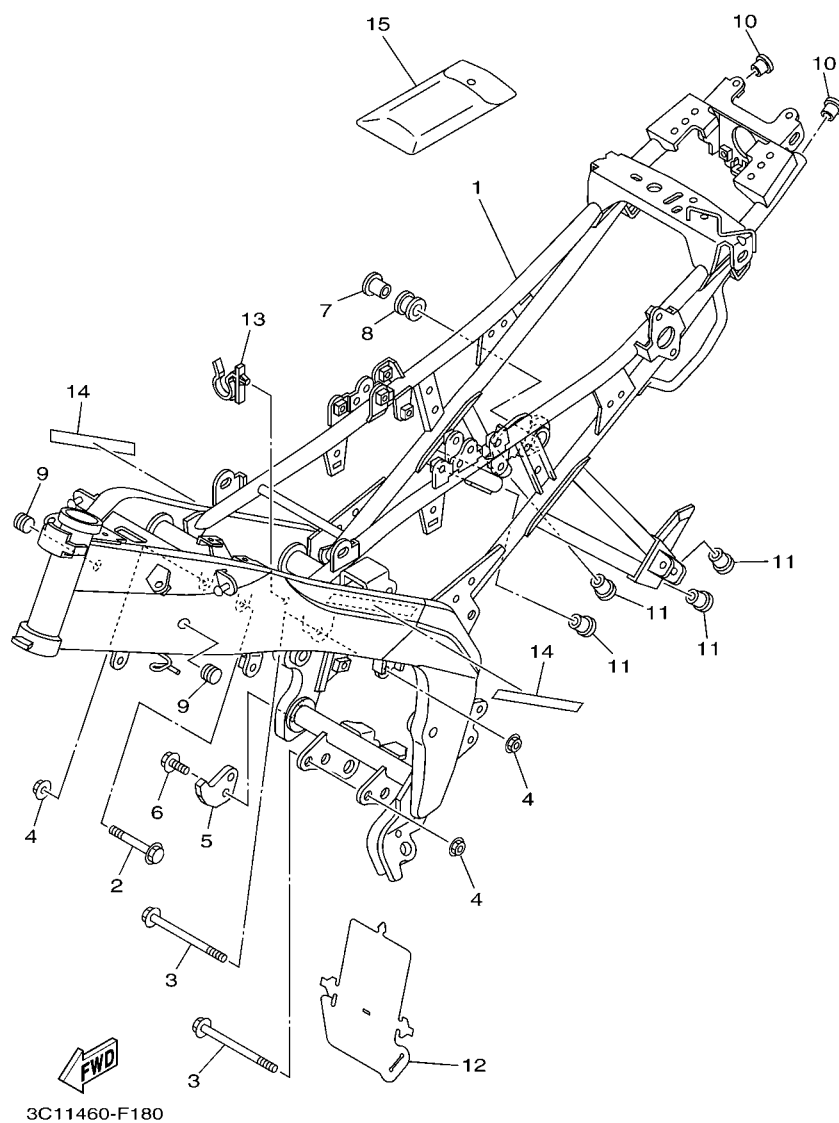


FIG. 18 FRAME

REF. NO.	PART NO.	DESCRIPTION	3C14				REMARKS
1	3C1-F1110-10	FRAME COMP.	1				
2	90105-10323	BOLT, FLANGE	1				
3	90105-10829	BOLT, FLANGE	2				
4	90179-10805	NUT	3				
5	3C1-F118W-00	STOPPER	1				
6	9581L-08020	BOLT, FLANGE	2				
7	90387-08813	COLLAR	1				
8	5TP-E4747-00	DAMPER, MUFFLER	1				
9	90338-15802	PLUG	2				
10	90338-18122	PLUG	2				
11	90338-16148	PLUG	4				
12	3C1-F2327-00	MUD GUARD 1	1				
13	3C1-F1338-00	CLAMP	1				
14	3C1-F118E-00	EMBLEM 1	2				
15	3C1-F8100-00	TOOL KIT	1				

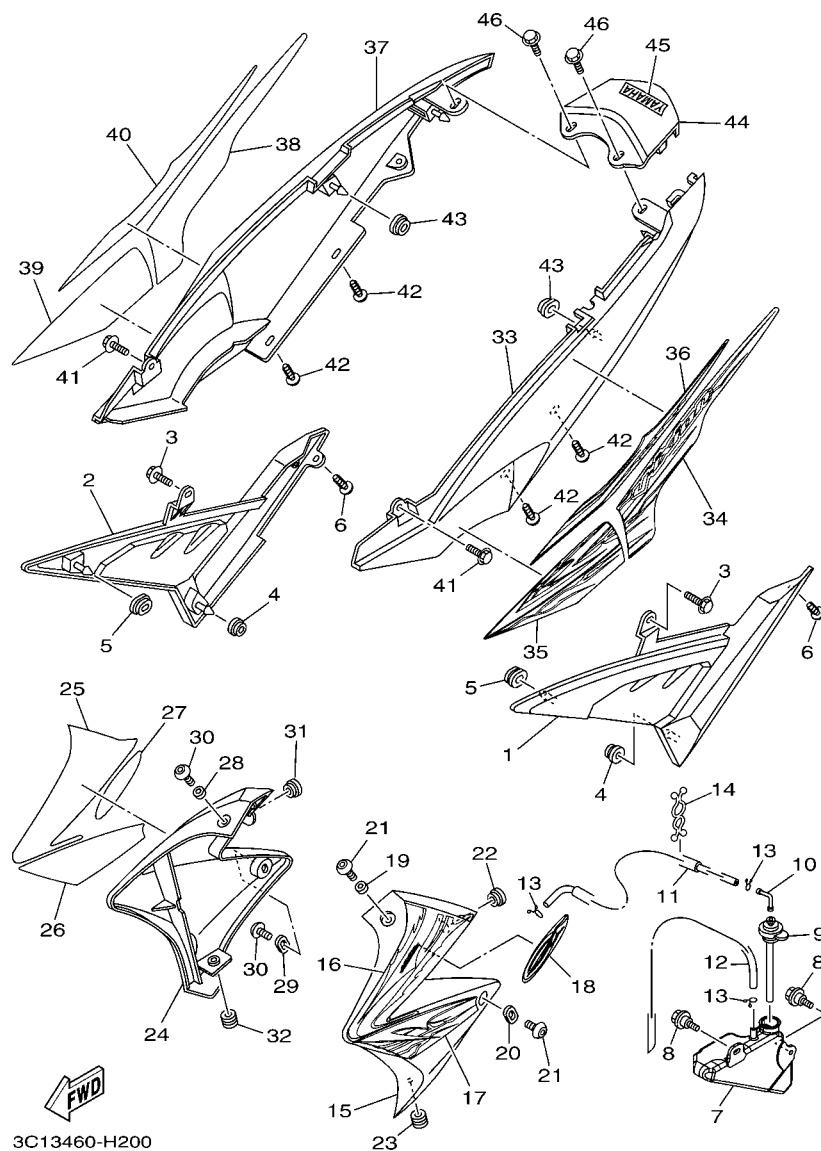


FIG. 20 SIDE COVER

REF. NO.	PART NO.	DESCRIPTION	3C14				REMARKS
1	3C1-F1711-00	COVER, SIDE 1	1				
2	3C1-F1721-00	COVER, SIDE 2	1				
3	90119-06044	BOLT, WITH WASHER	2				
4	90480-13567	GROMMET	2				
5	90480-01558	GROMMET	2				
6	97707-50014	SCREW, TRUSS HEAD TAPPING	2				
7	3C1-F1871-00	TANK, RECOVERY	1				
8	90109-06183	BOLT	2				
9	3C1-F1875-00	CAP	1				
10	3C1-F1828-00	ELBOW	1				
11	90445-08831	HOSE	1				
12	90445-08832	HOSE	1				
13	90467-08003	CLIP	3				
14	90464-14807	CLAMP	1				
15	3C1-F137W-00-P3	SCOOP, AIR 1	1				SMX
16	3C1-F137N-60	GRAPHIC 1	1				UR FOR DRMK
	3C1-F137N-70	GRAPHIC 1	1				UR FOR DBNM8
	3C1-F137N-80	GRAPHIC 1	1				UR FOR SMX
17	3C1-F137R-60	GRAPHIC 3	1				UR FOR DRMK
	3C1-F137R-70	GRAPHIC 3	1				UR FOR DBNM8
	3C1-F137R-80	GRAPHIC 3	1				UR FOR SMX
18	3C1-F179J-00	GRAPHIC,7	1				UR FOR DRMK
	3C1-F179J-10	GRAPHIC,7	1				UR FOR DBNM8
	3C1-F179J-20	GRAPHIC,7	1				UR FOR SMX
19	90387-06897	COLLAR	1				
20	3C1-F1748-00	COLLAR	1				
21	90149-06821	SCREW	2				

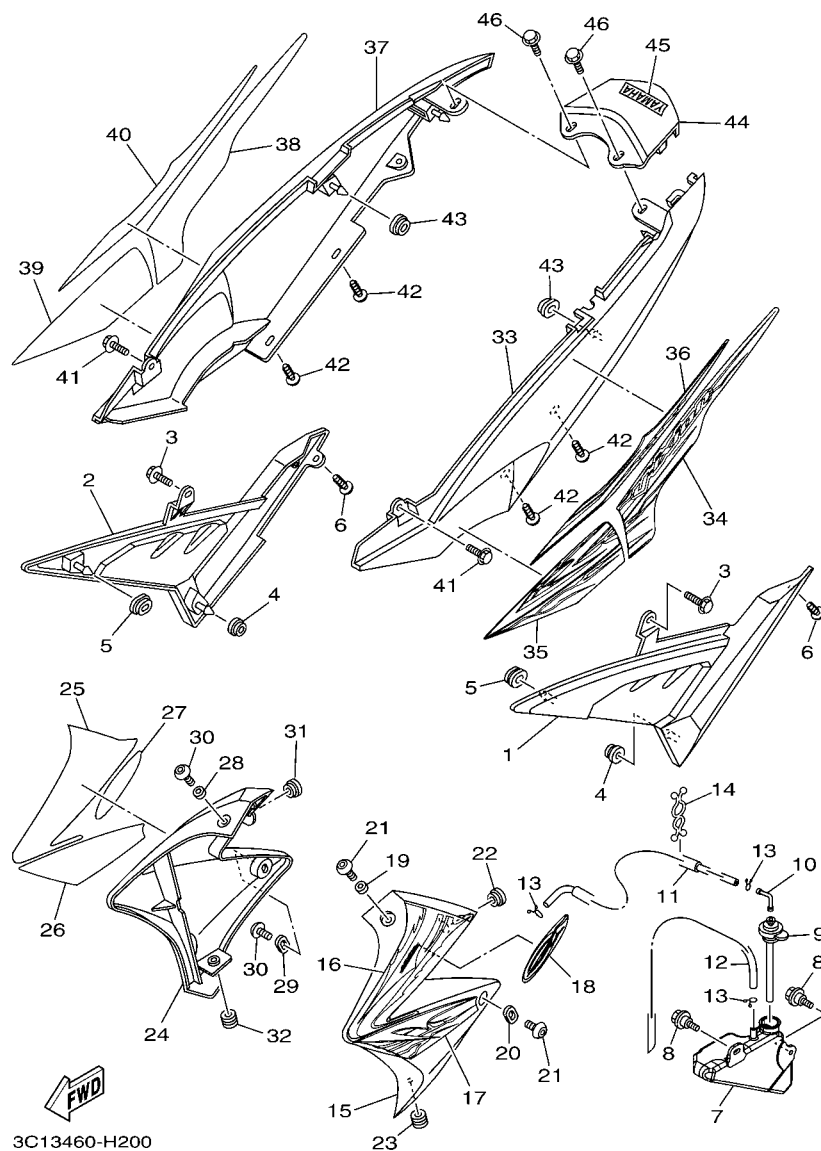


FIG. 20 SIDE COVER

REF. NO.	PART NO.	DESCRIPTION	3C14				REMARKS
22	90480-12320	GROMMET	1				
23	90480-10623	GROMMET	1				
24	3C1-F137X-00-P3	SCOOP, AIR 2	1				SMX
25	3C1-F137P-60	GRAPHIC 2	1				UR FOR DRMK
	3C1-F137P-70	GRAPHIC 2	1				UR FOR DBNM8
	3C1-F137P-80	GRAPHIC 2	1				UR FOR SMX
26	3C1-F137S-30	GRAPHIC 4	1				UR FOR DRMK
	3C1-F137S-40	GRAPHIC 4	1				UR FOR DBNM8
	3C1-F137S-50	GRAPHIC 4	1				UR FOR SMX
27	3C1-F179K-00	GRAPHIC,8	1				UR FOR DRMK
	3C1-F179K-10	GRAPHIC,8	1				UR FOR DBNM8
	3C1-F179K-20	GRAPHIC,8	1				UR FOR SMX
28	90387-06897	COLLAR	1				
29	3C1-F1748-00	COLLAR	1				
30	90149-06821	SCREW	2				
31	90480-12320	GROMMET	1				
32	90480-10623	GROMMET	1				
33	3C1-F1731-00-P2	COVER, SIDE 3	1				SMX
34	3C1-F173E-60	GRAPHIC, 1	1				UR FOR DRMK
	3C1-F173E-70	GRAPHIC, 1	1				UR FOR DBNM8
	3C1-F173E-80	GRAPHIC, 1	1				UR FOR SMX
35	3C1-F174G-60	GRAPHIC, 3	1				UR FOR DRMK
	3C1-F174G-70	GRAPHIC, 3	1				UR FOR DBNM8
	3C1-F174G-80	GRAPHIC, 3	1				UR FOR SMX
36	3C1-F174J-30	GRAPHIC, 5	1				UR FOR DRMK
	3C1-F174J-40	GRAPHIC, 5	1				UR FOR DBNM8
	3C1-F174J-50	GRAPHIC, 5	1				UR FOR SMX

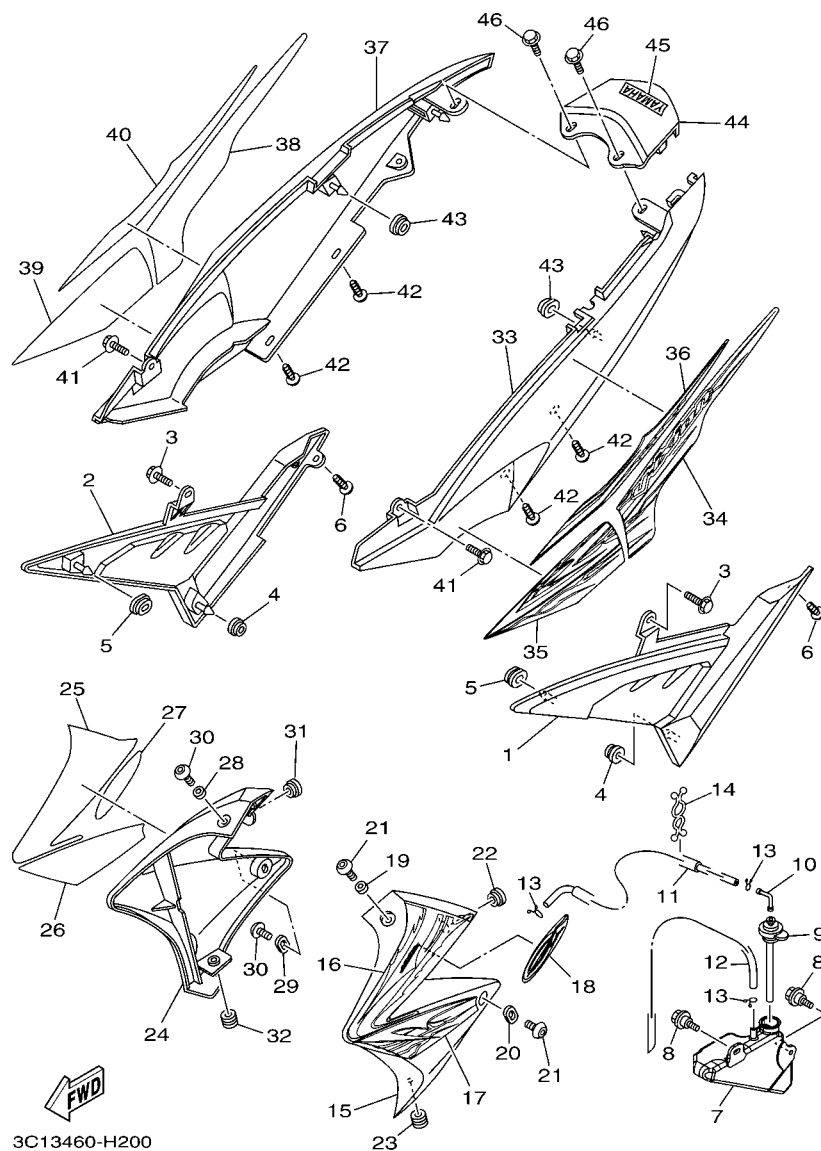


FIG. 20 SIDE COVER

REF. NO.	PART NO.	DESCRIPTION	3C14				REMARKS
37	3C1-F174I-00-P2	COVER, SIDE 4	1				SMX
38	3C1-F173F-60	GRAPHIC, 2	1				UR FOR DRMK
	3C1-F173F-70	GRAPHIC, 2	1				UR FOR DBNM8
	3C1-F173F-80	GRAPHIC, 2	1				UR FOR SMX
39	3C1-F174H-60	GRAPHIC, 4	1				UR FOR DRMK
- - -	3C1-F174H-70	GRAPHIC, 4	1	-	-	-	UR FOR DBNM8
	3C1-F174H-80	GRAPHIC, 4	1				UR FOR SMX
40	3C1-F174K-30	GRAPHIC, 6	1				UR FOR DRMK
	3C1-F174K-40	GRAPHIC, 6	1				UR FOR DBNM8
	3C1-F174K-50	GRAPHIC, 6	1				UR FOR SMX
- - -	90119-06044	BOLT, WITH WASHER	2	-	-	-	- - - - -
42	97707-50014	SCREW, TRUSS HEAD TAPPING	4				
43	90480-01558	GROMMET	2				
44	3C1-F171E-00-P2	COVER, SIDE 5	1				SMX
45	5BP-F153E-30	EMBLEM, YAMAHA	1				
- - -	90119-06044	BOLT, WITH WASHER	2	-	-	-	- - - - -
- - - - -							
- - - - -							
- - - - -							

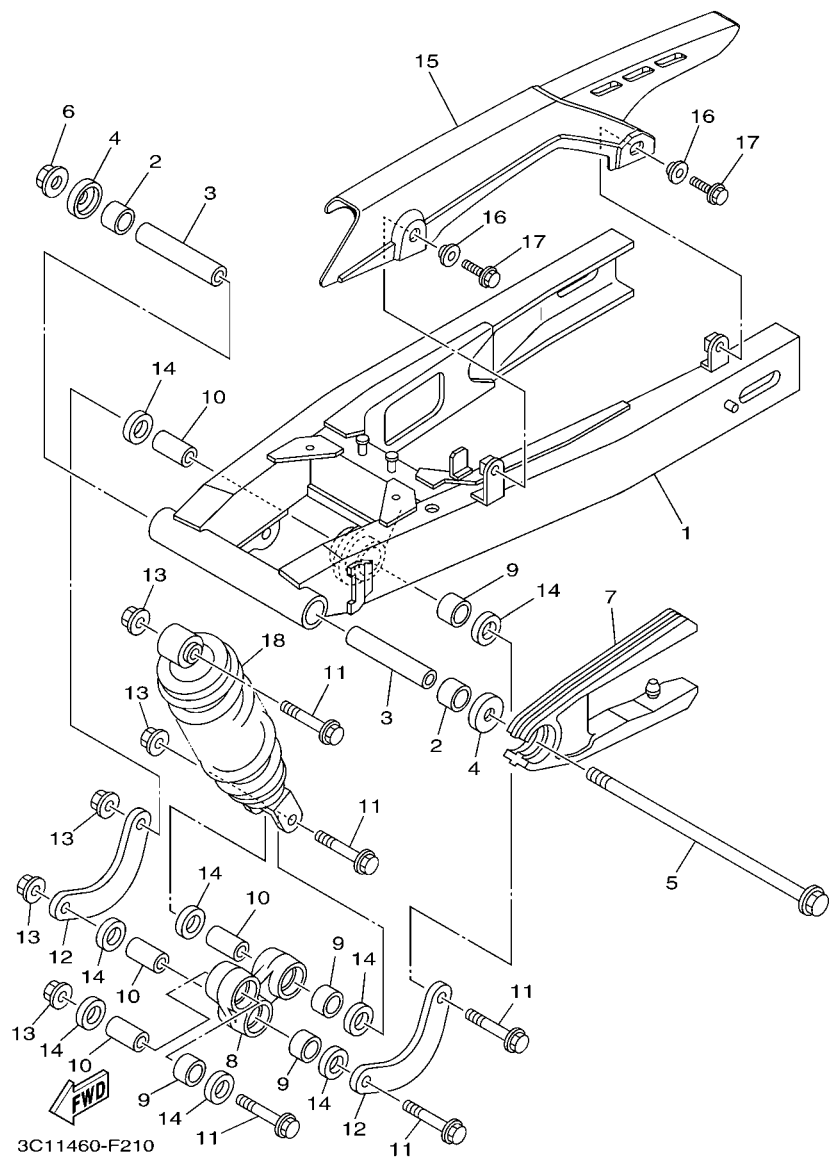


FIG. 21 REAR ARM & SUSPENSION

[illegible]

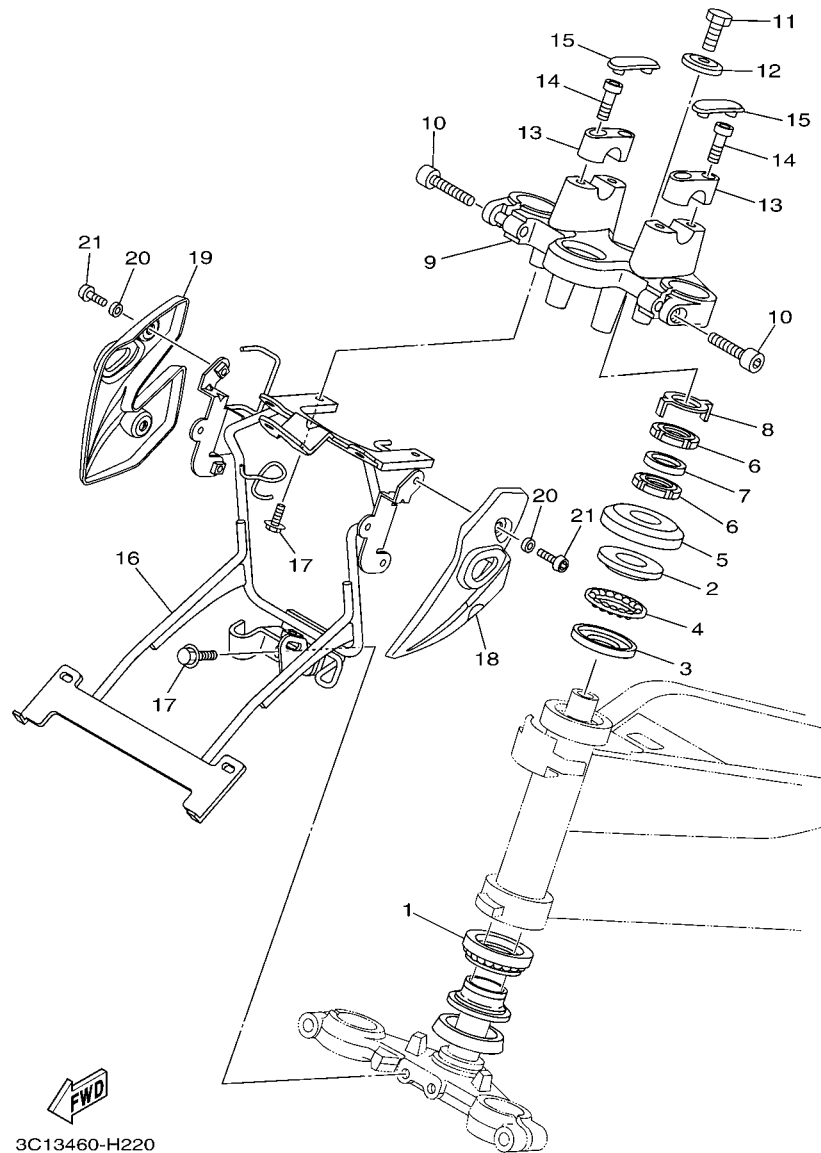


FIG. 22 STEERING

REF. NO.	PART NO.	DESCRIPTION	3C14				REMARKS
1	5BP-F3873-01	BEARING, STEERING UPPER	1				
2	183-23411-00	RACE, BALL 1	1				
3	183-23412-00	RACE, BALL 2	1				
4	5TL-2341E-00	RETAINER, BALL BEARING	1				
5	5BP-F3416-00	COVER, BALL RACE 2	1				
6	90179-25615	NUT	2				
7	90202-26142	WASHER, PLATE	1				
8	5BP-F3418-00	WASHER, SPECIAL	1				
9	3C1-F3435-00	CROWN, HANDLE	1				
10	9131L-08030	BOLT	2				
11	90105-10006	BOLT, FLANGE	1				
12	90209-10020	WASHER	1				
13	3KA-F3441-10	HOLDER, HANDLE UPPER	2				
14	91317-08030	BOLT	4				
15	3KA-F3469-00	CAP, BOLT	2				
16	3C1-F3174-21	STAY, HEADLIGHT	1				
17	95027-06012	BOLT, FLANGE	4				
18	3C1-F3122-00-P0	COVER, OUTER 1	1				S8
19	3C1-F3132-00-P0	COVER, OUTER 2	1				S8
20	90387-06897	COLLAR	4				
21	90149-06821	SCREW	4				

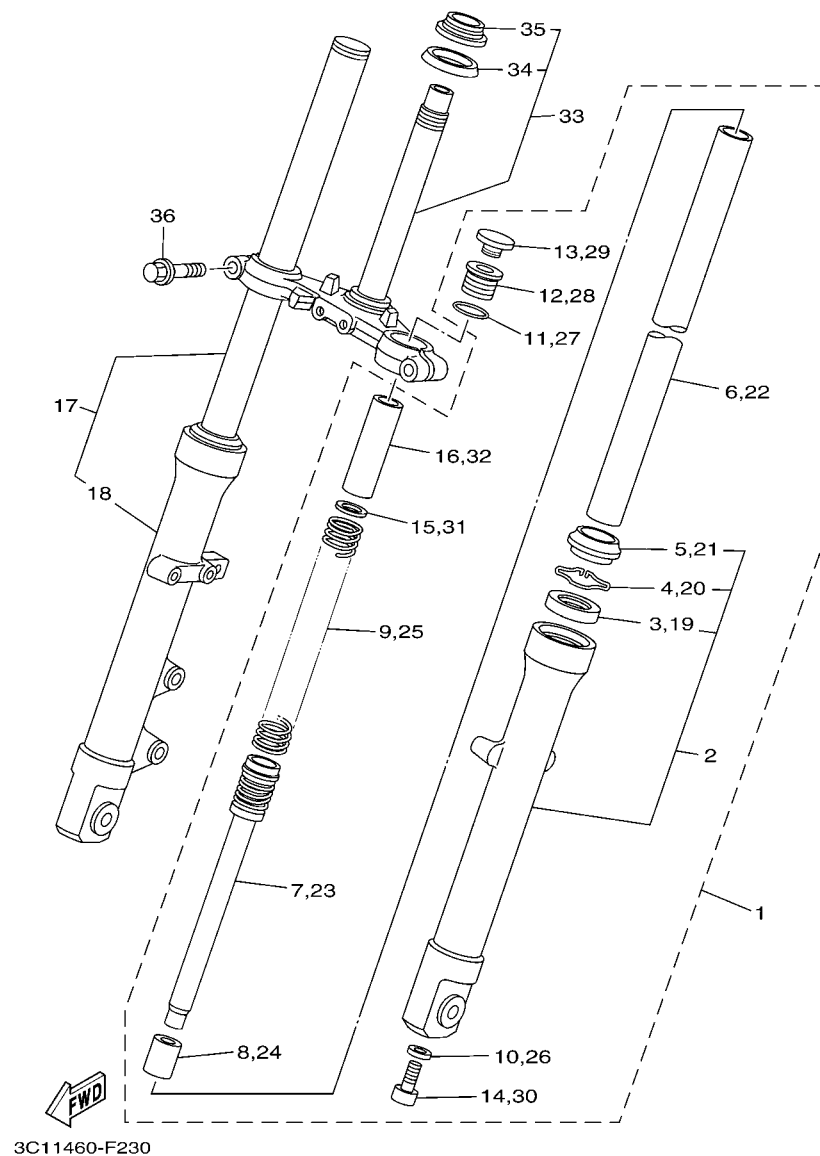


FIG. 23 FRONT FORK

REF. NO.	PART NO.	DESCRIPTION	3C14				REMARKS
1	3C1-F3102-10	FRONT FORK ASSY (L.H)	1				
2	3C1-F3126-10	.TUBE, OUTER (LEFT)	1				
3	5BP-F3145-00	..OIL SEAL	1				
4	22W-F3156-L0	..RING, SNAP	1				
5	5BP-F3144-00	..SEAL, DUST	1				
6	3C1-F3110-01	.INNER TUBE COMP.1	1				
7	3C1-F3170-00	.CYLINDER COMP., FRONT FORK	1				
8	2JK-F3173-00	.SPINDLE, TAPER	1				
9	3C1-F3141-00	.SPRING, FRONT FORK	1				
10	509-F3158-L0	.GASKET	1				
11	2JK-F3114-00	.GASKET	1				
12	3C1-F3111-00	.BOLT, CAP	1				
13	2N4-23168-00	.PLUG	1				
14	2JK-F3181-00	.BOLT, HEXAGON SOCKET HEAD	1				
15	2JK-F3149-01	.WASHER, SPRING UPPER	1				
16	3C1-F3118-01	.SPACER	1				
17	3C1-F3103-10	FRONT FORK ASSY (R.H)	1				
18	3C1-F3136-10	.TUBE, OUTER (RIGHT)	1				
19	5BP-F3145-00	..OIL SEAL	1				
20	22W-F3156-L0	..RING, SNAP	1				
21	5BP-F3144-00	..SEAL, DUST	1				
22	3C1-F3110-01	.INNER TUBE COMP.1	1				
23	3C1-F3170-00	.CYLINDER COMP., FRONT FORK	1				
24	2JK-F3173-00	.SPINDLE, TAPER	1				
25	3C1-F3141-00	.SPRING, FRONT FORK	1				
26	509-F3158-L0	.GASKET	1				
27	2JK-F3114-00	.GASKET	1				

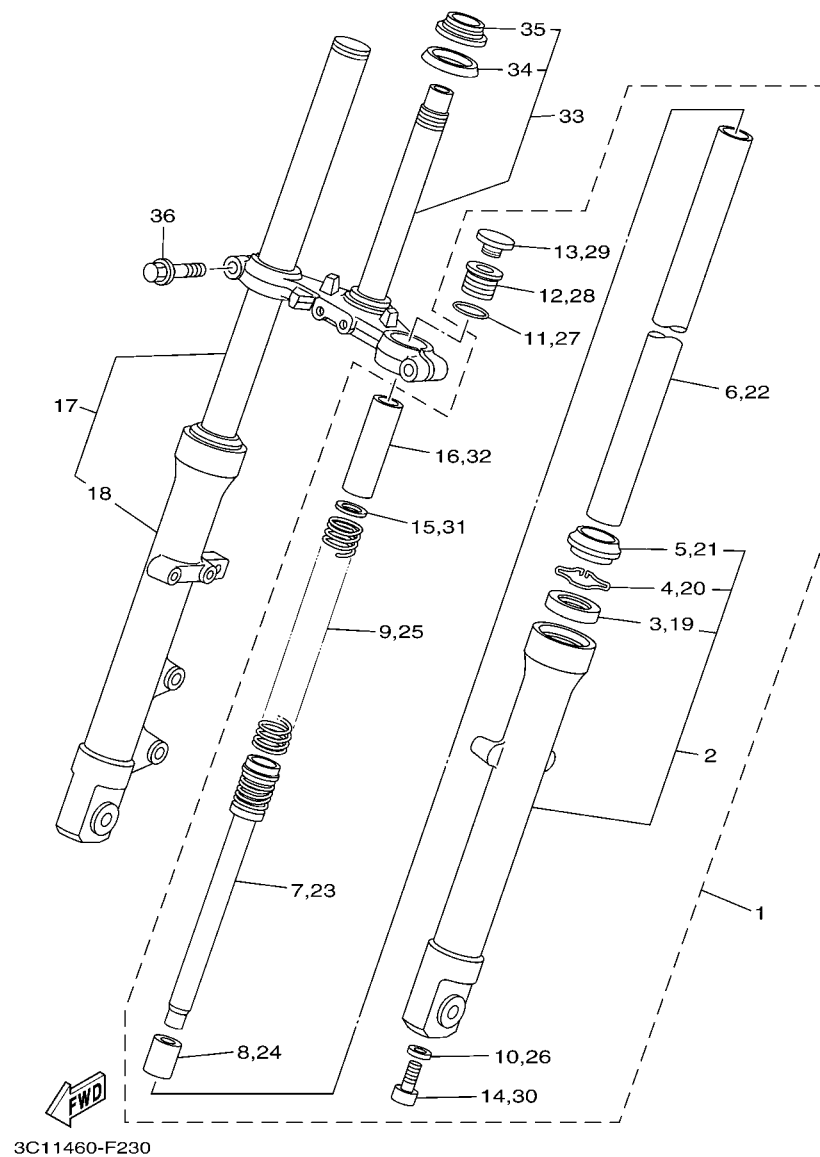


FIG. 23 FRONT FORK

[illegible]

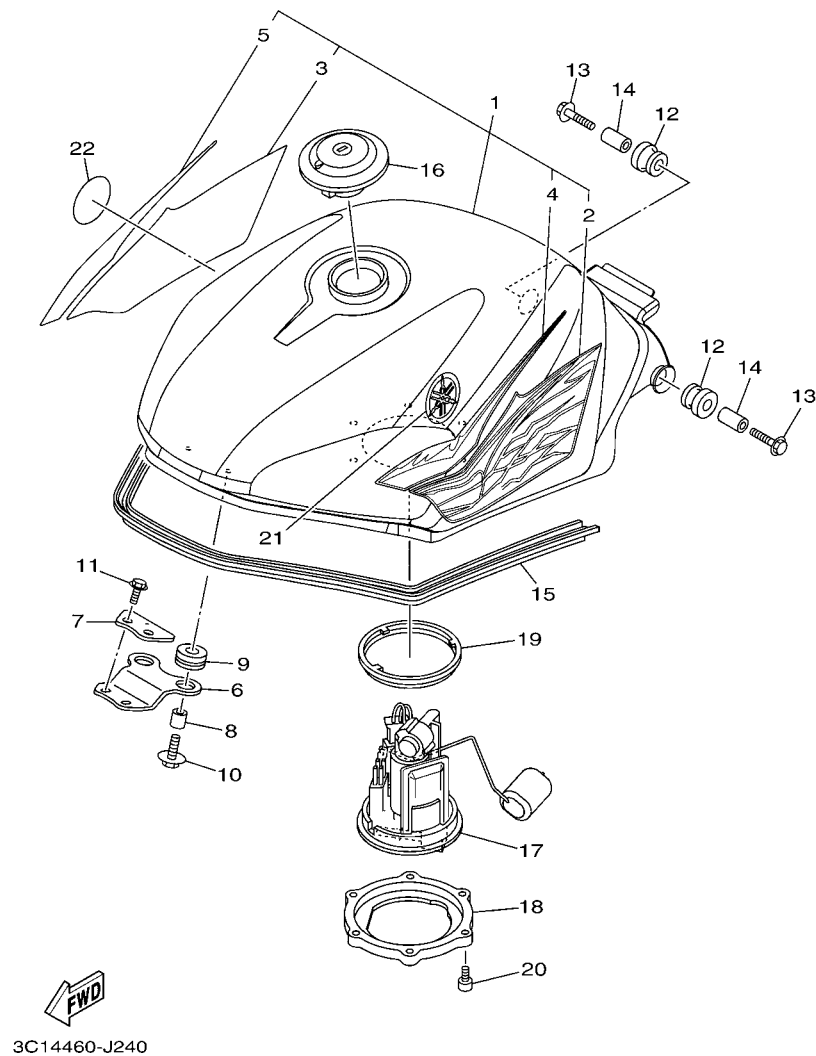


FIG. 24 FUEL TANK

REF. NO.	PART NO.	DESCRIPTION	3C14				REMARKS
1	3C1-F4100-60-P0	FUEL TANK ASSY	1				UR FOR DRMK
	3C1-F4100-70-P0	FUEL TANK ASSY	1				UR FOR DBNM8
	3C1-F4100-80-P0	FUEL TANK ASSY	1				UR FOR SMX
2	3C1-F4244-60	.GRAPHIC, FUEL TANK 1	1				UR FOR DRMK
	3C1-F4244-70	.GRAPHIC, FUEL TANK 1	1				UR FOR DBNM8
	3C1-F4244-80	.GRAPHIC, FUEL TANK 1	1				UR FOR SMX
3	3C1-F4245-60	.GRAPHIC, FUEL TANK 2	1				UR FOR DRMK
	3C1-F4245-70	.GRAPHIC, FUEL TANK 2	1				UR FOR DBNM8
	3C1-F4245-80	.GRAPHIC, FUEL TANK 2	1				UR FOR SMX
4	3C1-F4246-00	.GRAPHIC 3	1				UR FOR DRMK
	3C1-F4246-10	.GRAPHIC 3	1				UR FOR DBNM8
	3C1-F4246-20	.GRAPHIC 3	1				UR FOR SMX
5	3C1-F4247-00	.GRAPHIC	1				UR FOR DRMK
	3C1-F4247-10	.GRAPHIC	1				UR FOR DBNM8
	3C1-F4247-20	.GRAPHIC	1				UR FOR SMX
6	3C1-F4191-00	BRACKET, FUEL TANK 1	1				
7	3C1-F411F-00	PLATE, FITTING	1				
8	90387-06892	COLLAR	2				
9	90480-15483	GROMMET	2				
10	90119-06877	BOLT, WITH WASHER	2				
11	9582L-06016	BOLT, FLANGE	2				
12	90480-18549	GROMMET	2				
13	95827-06030	BOLT, FLANGE	2				
14	90387-06890	COLLAR	2				
15	3C1-F4188-00	MOLD, FUEL TANK	1				
16	3C1-F4610-00	CAP ASSY	1				
17	3C1-E3907-10	FUEL PUMP COMP.	1				

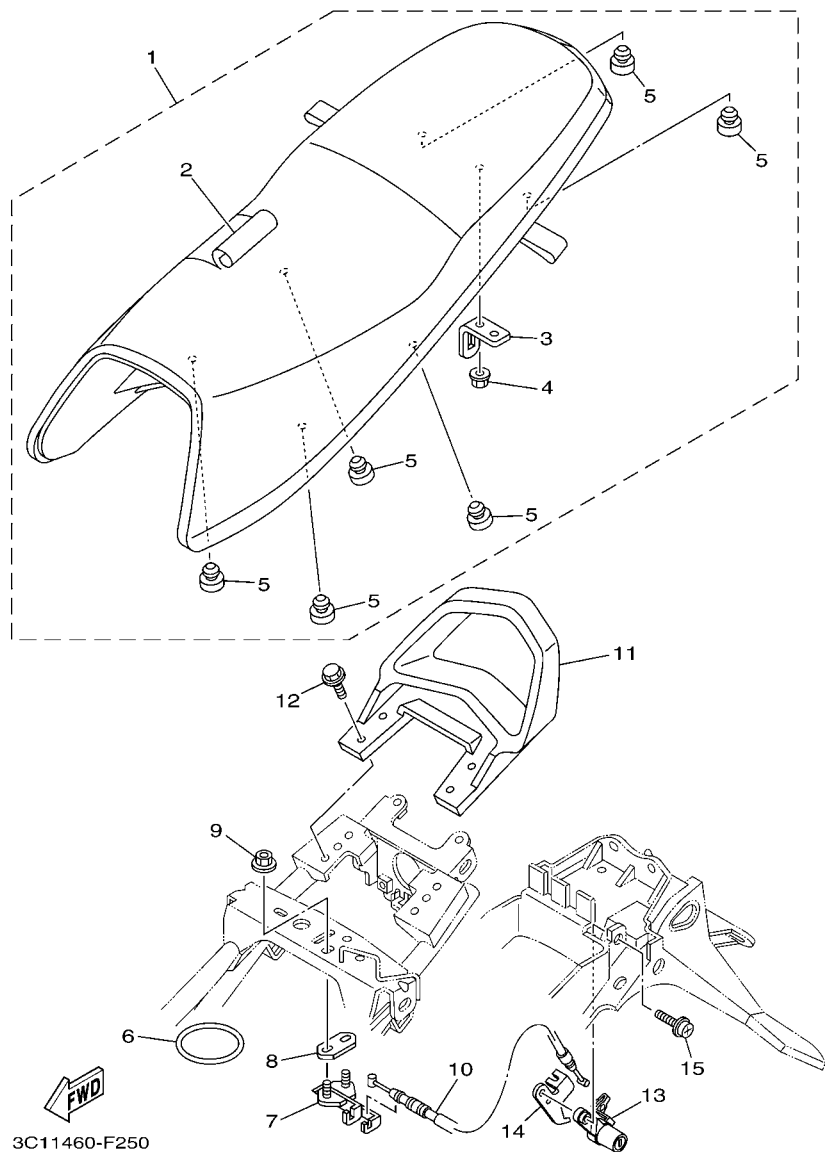


FIG. 25 SEAT

REF. NO.	PART NO.	DESCRIPTION	3C14				REMARKS
1	3C1-F4730-10	DOUBLE SEAT ASSY	1				
2	3C1-F4731-00	.COVER, SEAT	1				
3	3C1-F4728-00	.BRACKET, SEAT	1				
4	9570L-06500	.NUT, FLANGE	1				
5	3C1-F4741-00	.PAD, SEAT	6				
6	5TL-H2131-00	BAND, BATTERY	1				
7	5BP-F4780-00	SEAT LOCK ASSY	1				
8	5BP-F4792-00	PLATE	1				
9	95707-06500	NUT, FLANGE	2				
10	3C1-F478E-00	CABLE, SEAT LOCK	1				
11	3C1-F4773-00-7B	HANDLE, SEAT	1				BIB2
12	95827-08020	BOLT, FLANGE	4				
13	3C1-F4799-00	ROTOR ASSY	1				
14	1S7-F117K-00	STAY, LOCK	1				
15	90159-06033	SCREW, WITH WASHER	1				

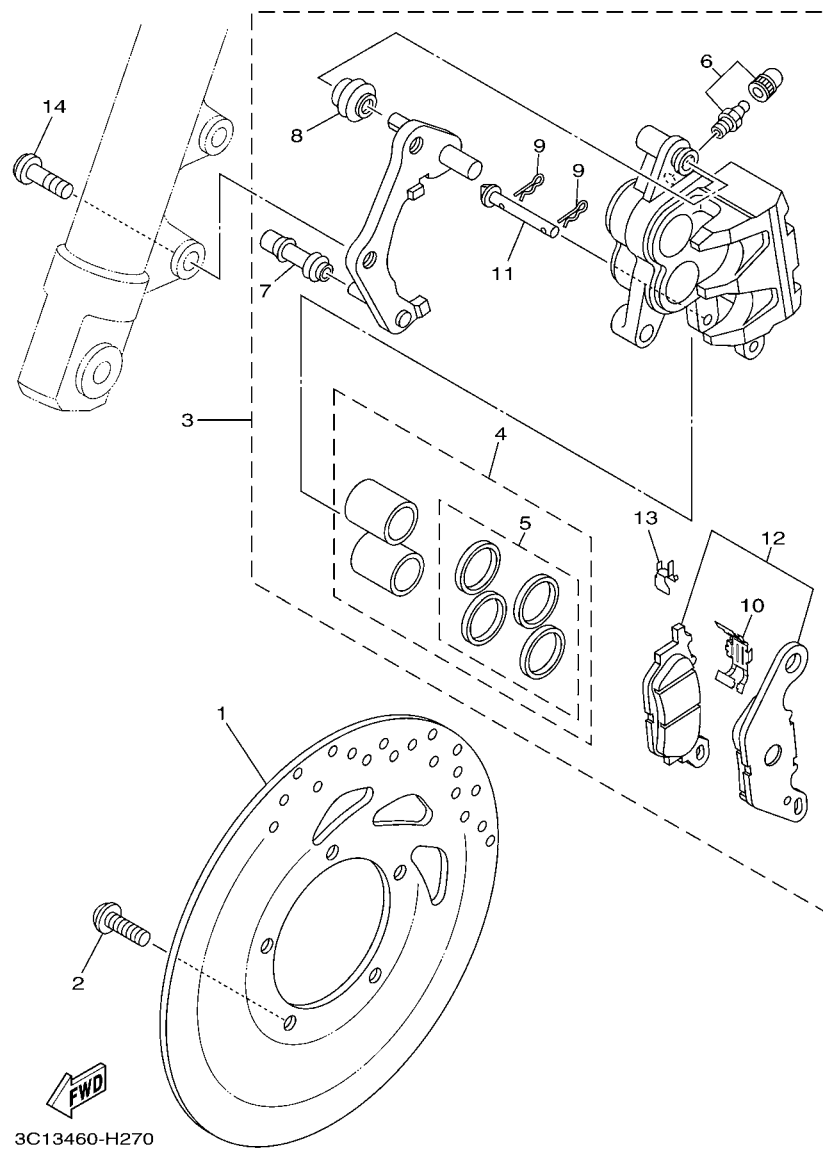


FIG. 27 FRONT BRAKE CALIPER

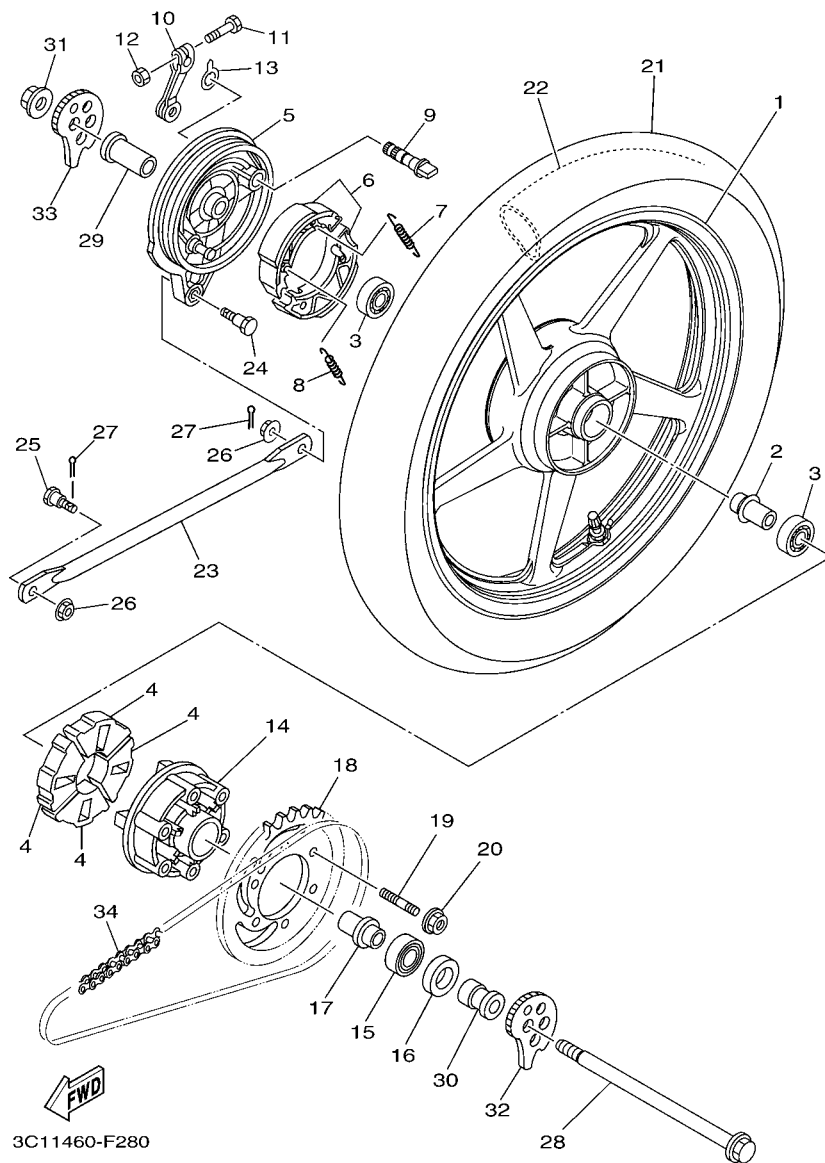


FIG. 28 REAR WHEEL

REF. NO.	PART NO.	DESCRIPTION	3C14				REMARKS
1	3C1-F5338-00	CAST WHEEL, REAR	1				UR YAMAHA
	3C1-F5338-10	CAST WHEEL, REAR	1				UR ENKEI
2	5BP-F530S-00	COLLAR ASSY	1				
3	93306-252X7	BEARING	2				
4	3C1-F5364-00	DAMPER	4				
5	5BP-F5321-01-33	PLATE, BRAKE SHOE	1				YB
6	5BP-WF253-10	BRAKE SHOE COMP.	1				
7	90506-12001	SPRING, TENSION	1				
8	90506-15001	SPRING, TENSION	1				
9	5BP-F5351-00	CAMSHAFT	1				
10	5BP-F5355-00	LEVER, CAMSHAFT	1				
11	90101-06278	BOLT	1				
12	95307-06600	NUT	1				
13	4ST-F533A-00	PLATE, INDICATOR	1				
14	3C1-F5366-00-33	CLUTCH, HUB	1				YB
15	93306-004XV	BEARING	1				
16	93106-26815	OIL SEAL	1				
17	90387-158V4	COLLAR	1				
18	3C1-F5442-00	SPROCKET, DRIVEN (42T)	1				
19	90116-08812	BOLT, STUD	6				
20	95602-08200	NUT, SELF-LOCKING	6				
21	94109-17801	TIRE (90/90-17 49P NR72)	1				UR INOUE
	94109-17802	TIRE (90/90-17 49P D102A)	1				UR DUNLOP
22	94218-17800	TUBE (3.00/3.25-17 TR4)	1				UR INOUE
	94227-17805	TUBE (2.75-17 TR4)	1				UR DUNLOP
23	3C1-F5371-00	BAR, TENSION	1				
24	90109-08063	BOLT	1				

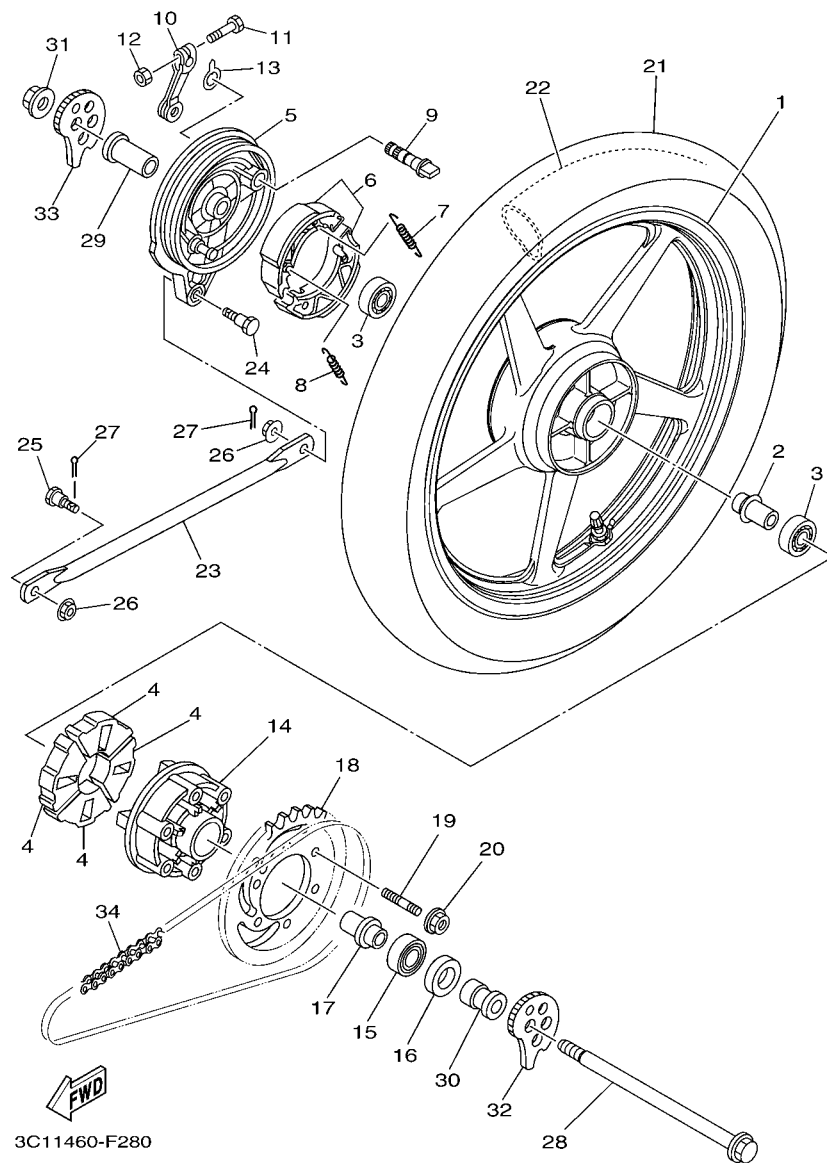


FIG. 28 REAR WHEEL

[illegible]

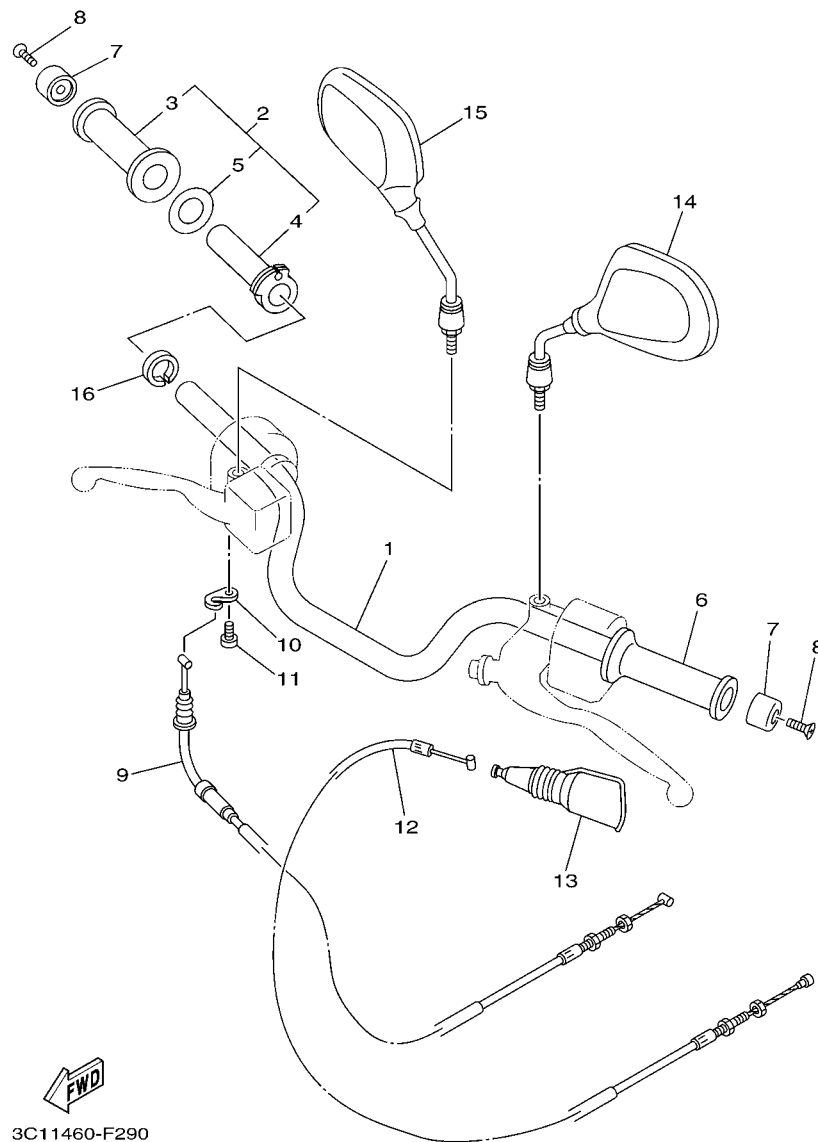


FIG. 29 STEERING HANDLE & CABLE

[illegible]

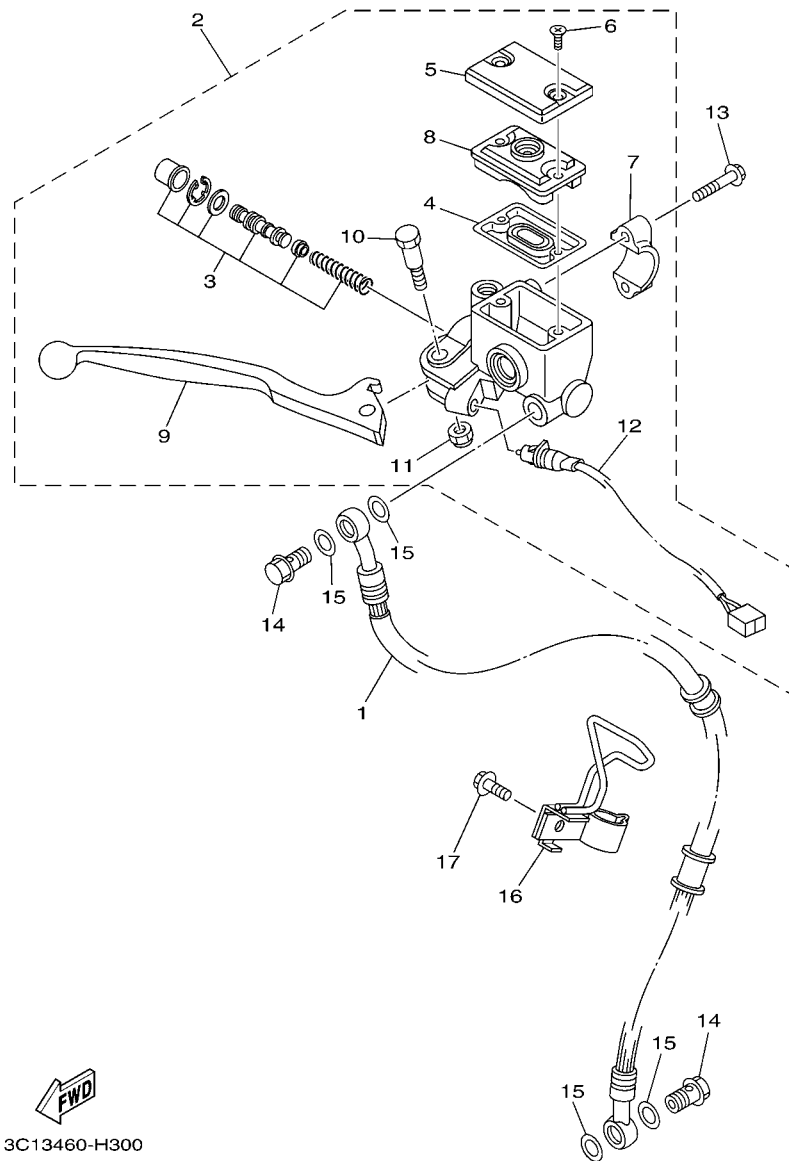


FIG. 30 FRONT MASTER CYLINDER

REF. NO.	PART NO.	DESCRIPTION	3C14				REMARKS
1	3C1-F5872-00	HOSE, BRAKE 1	1				
2	3C1-F583T-02	MASTER CYLINDER ASSY	1				
3	5P0-W0041-00	.CYLINDER KIT, MASTER	1				
4	3RW-F5854-00	.DIAPHRAGM, RESERVOIR	1				
5	3C1-F5852-00	.CAP, RESERVOIR	1				
6	36Y-2589H-00	.SCREW	2				
7	3RW-F5867-00	.BRACKET, MASTER CYLINDER	1				
8	3C1-F5855-00	.BUSH,DIAPHRAGM	1				
9	3C1-H3922-00	.LEVER 2	1				
10	90109-06577	.BOLT	1				
11	95602-06100	.NUT, U	1				
12	5BP-H3980-10	.FRONT STOP SWITCH ASSY	1				
13	95027-06025	BOLT, FLANGE	2				
14	90401-10812	BOLT, UNION	2				
15	90201-10118	WASHER, PLATE	4				
16	3C1-F5886-01	HOLDER, BRAKE HOSE	1				
17	95027-06016	BOLT, FLANGE	1				

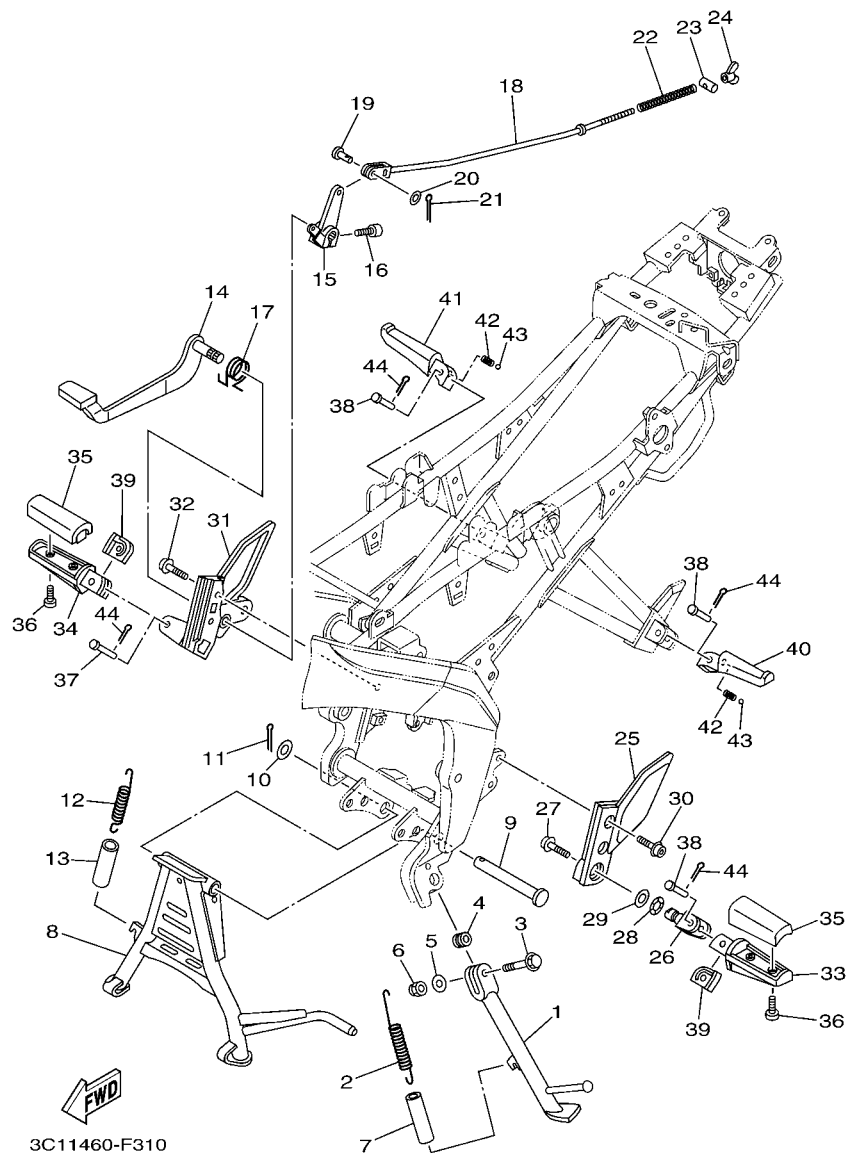


FIG. 31 STAND & FOOTREST

REF. NO.	PART NO.	DESCRIPTION	3C14				REMARKS
1	3C1-F7311-00	STAND, SIDE	1				
2	90506-28800	SPRING, TENSION	1				
3	90105-106A7	BOLT, FLANGE	1				
4	90387-10003	COLLAR	1				
5	92907-10600	WASHER, PLATE	1				
6	95612-10100	NUT, U	1				
7	90445-21848	HOSE (L70)	1				
8	3C1-F7111-00	STAND, MAIN	1				
9	3C1-F7112-00	SHAFT, MAIN STAND	1				
10	90201-163H8	WASHER, PLATE	1				
11	91401-30030	PIN, COTTER	1				
12	90506-35003	SPRING, TENSION	1				
13	90445-21848	HOSE (L70)	1				
14	3C1-F7211-00	PEDAL, BRAKE	1				
15	3C1-F7262-00	LEVER	1				
16	91317-06020	BOLT	1				
17	3C1-F7216-00	SPRING, RETURN	1				
18	3C1-F7231-00	ROD, BRAKE	1				
19	91701-06018	PIN	1				
20	92907-06600	WASHER, PLATE	1				
21	91401-20012	PIN, COTTER	1				
22	90501-10245	SPRING, COMPRESSION	1				
23	90249-12008	PIN	1				
24	90175-06013	NUT, WING	1				
25	3C1-F7452-00	BRACKET, FOOTREST 1	1				
26	5BP-F7411-00	FOOTREST 1	1				
27	90110-10801	BOLT, HEXAGON SOCKET HEAD	1				

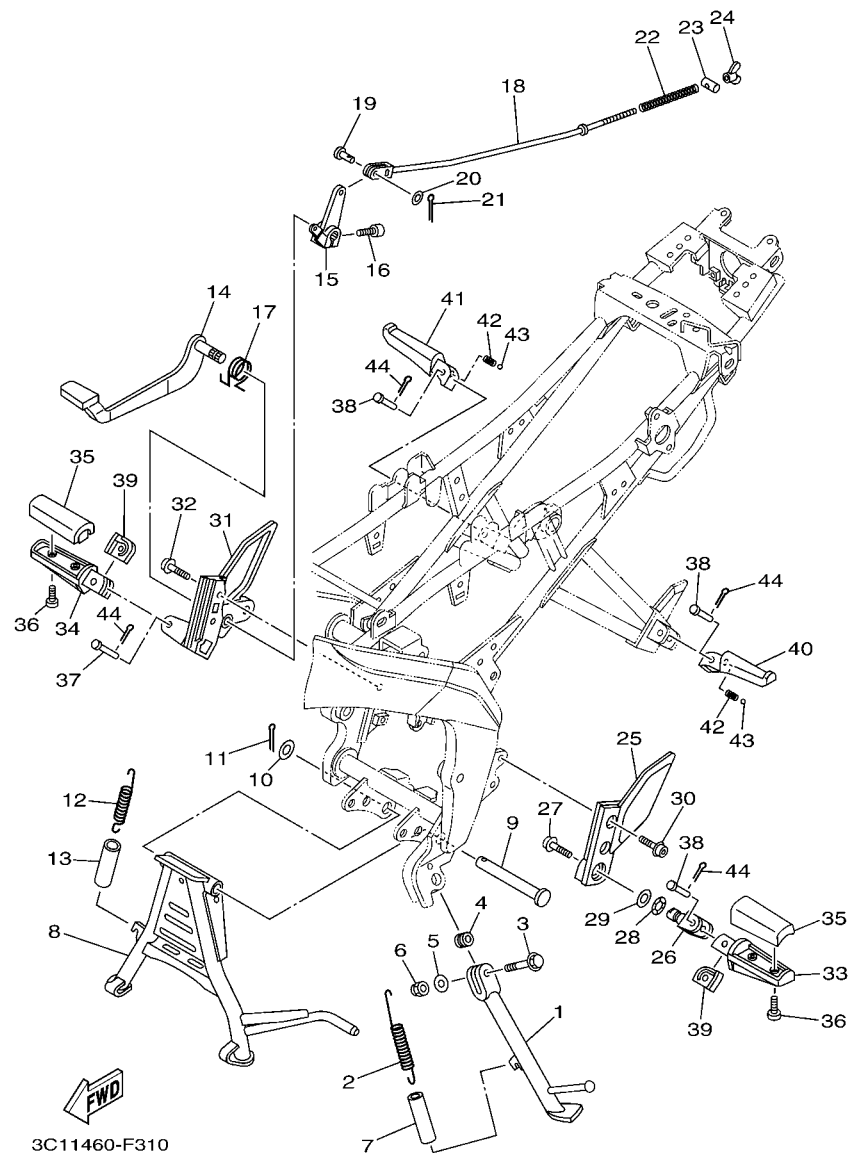


FIG. 31 STAND & FOOTREST

REF. NO.	PART NO.	DESCRIPTION	3C14				REMARKS
28	90206-17084	WASHER, WAVE	1				
29	90201-173U5	WASHER, PLATE	1				
30	90110-08803	BOLT, HEXAGON SOCKET HEAD	2				
31	3C1-F7462-00	BRACKET, FOOTREST 2	1				
32	90110-08803	BOLT, HEXAGON SOCKET HEAD	2				
33	5BP-F7451-00	FOOTREST	1				
34	5BP-F7461-00	FOOTREST	1				
35	3C1-F7413-00	COVER, FOOTREST	2				
36	90157-05079	SCREW, PAN HEAD	4				
37	90240-08145	PIN, CLEVIS	1				
38	90240-08144	PIN, CLEVIS	3				
39	3C1-F7426-00	SPRING, RETURN	2				
40	3C1-F7431-00	FOOTREST, REAR 1	1				
41	3C1-F7441-00	FOOTREST, REAR 2	1				
42	90501-12743	SPRING, COMPRESSION	2				
43	93501-04830	BALL	2				
44	91401-25015	PIN, COTTER	4				

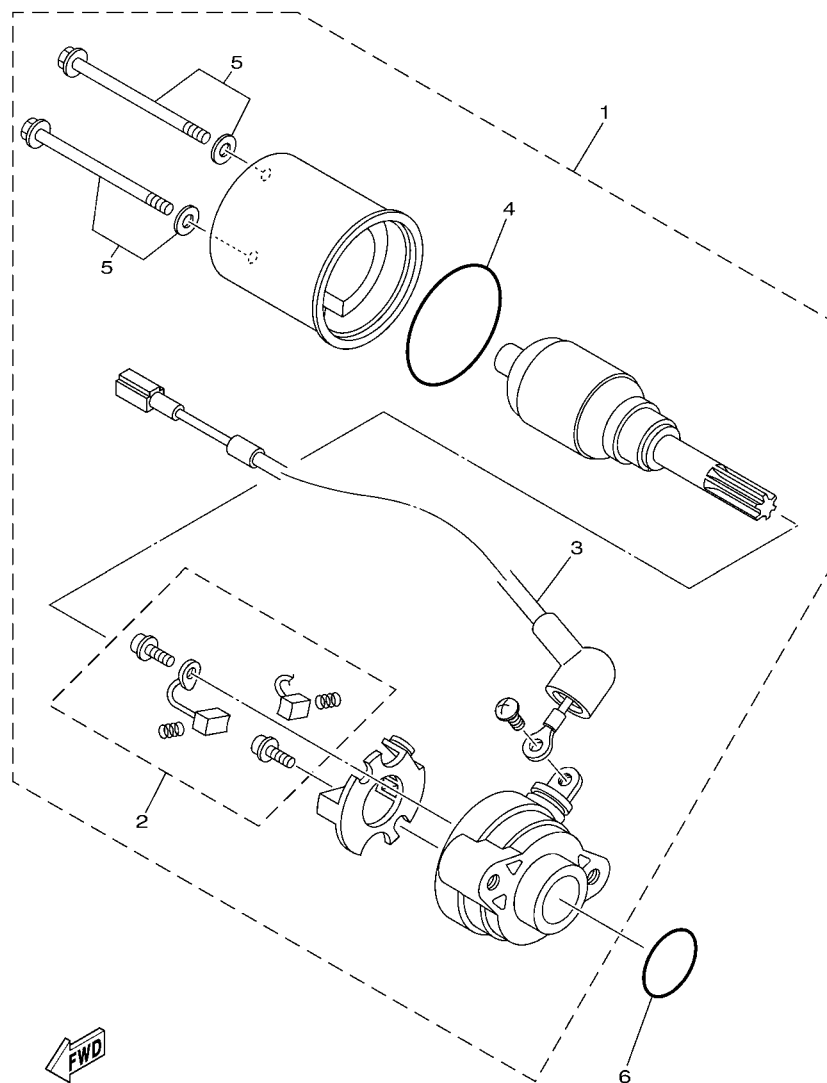


FIG. 33 STARTING MOTOR

[illegible]

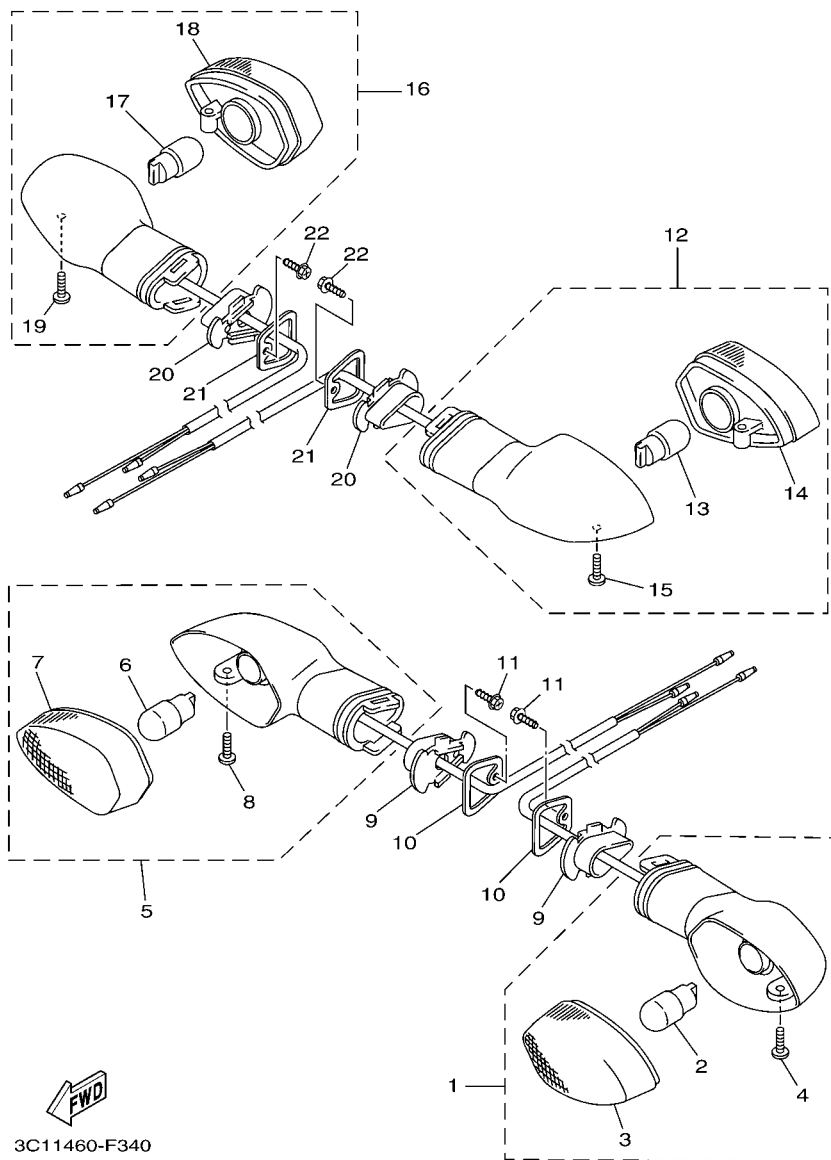


FIG. 34 FLASHER LIGHT

REF. NO.	PART NO.	DESCRIPTION	3C14				REMARKS
1	3C1-H3310-00	FRONT FLASHER LIGHT ASSY 1	1				
2	5LL-H3311-00	.BULB, FLASHER (12V-10W) AMBER	1				
3	3C1-H333A-00	.LENS COMP 1	1				
4	97706-04012	.SCREW, TAPPING	1				
5	3C1-H3320-00	FRONT FLASHER LIGHT ASSY 2	1				
6	5LL-H3311-00	.BULB, FLASHER (12V-10W) AMBER	1				
7	3C1-H334A-00	.LENS COMP 2	1				
8	97706-04012	.SCREW, TAPPING	1				
9	3C1-H3318-00	STAY, FLASHER 1	2				
10	3KA-H331L-00	PLATE, STOPPER	2				
11	90163-04800	SCREW, TAPPING	2				
12	3C1-H3330-00	REAR FLASHER LIGHT ASSY 1	1				
13	5LL-H3311-00	.BULB, FLASHER (12V-10W) AMBER	1				
14	3C1-H334A-00	.LENS COMP 2	1				
15	97706-04012	.SCREW, TAPPING	1				
16	3C1-H3340-00	REAR FLASHER LIGHT ASSY 2	1				
17	5LL-H3311-00	.BULB, FLASHER (12V-10W) AMBER	1				
18	3C1-H333A-00	.LENS COMP 1	1				
19	97706-04012	.SCREW, TAPPING	1				
20	3C1-H3318-00	STAY, FLASHER 1	2				
21	3KA-H331L-00	PLATE, STOPPER	2				
22	90163-04800	SCREW, TAPPING	2				

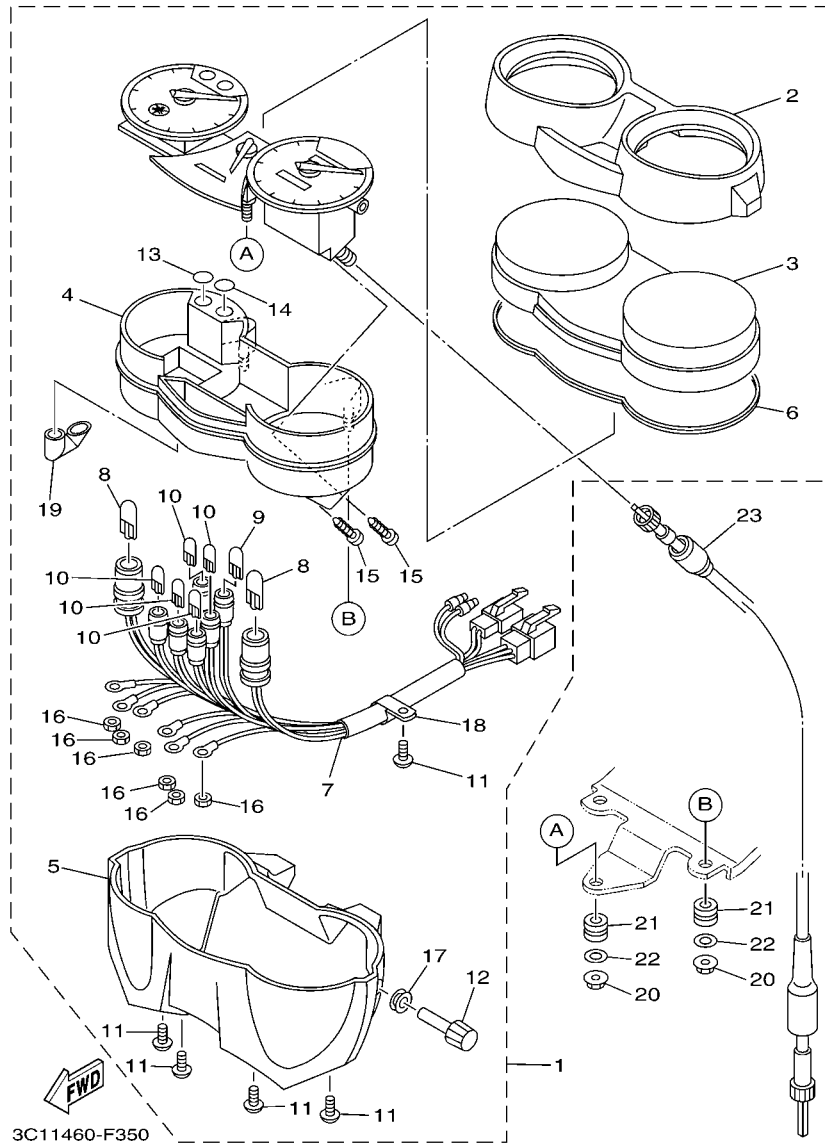


FIG. 35 METER

REF. NO.	PART NO.	DESCRIPTION	3C14				REMARKS
1	3C1-H3500-01	METER ASSY	1				
2	3C1-H353G-00	.CASE, UPPER	1				
3	3C1-H3511-00	.LENS, SPEEDOMETER	1				
4	3C1-H353A-00	.CASE COMP.	1				
5	3C1-H359E-00	.CASE	1				
6	3C1-H357K-00	.PACKING,METER	1				
7	3C1-H355H-00	.SOCKET CORD ASSY	1				
8	3C1-H3518-00	.BULB, METER (12V-3.4W T10)	2				
9	3C1-H3518-10	.BULB, METER (12V-1.5W T6.5)	1				
10	5HH-H3517-00	.BULB (14V-3W T6.5)	5				
11	9770M-40010	.SCREW, TAPPING	5				
12	3C1-H3578-00	.KNOB, TRIP METER	1				
13	3C1-H356C-00	.LENZ, PILOT 1	1				
14	3C1-H356F-00	.LENZ, PILOT 2	1				
15	9890L-04008	.SCREW, BIND	2				
16	9530N-03600	.NUT	6				
17	3C1-H357L-00	.PACKING, METER 2	1				
18	3C1-H3595-00	.CLAMP	1				
19	3C1-H411V-00	.CAP	4				
20	9570M-06500	NUT, FLANGE	3				
21	90480-10801	GROMMET	3				
22	90201-06830	WASHER, PLATE	3				
23	3C1-H3550-00	SPEEDOMETER CABLE ASSY	1				

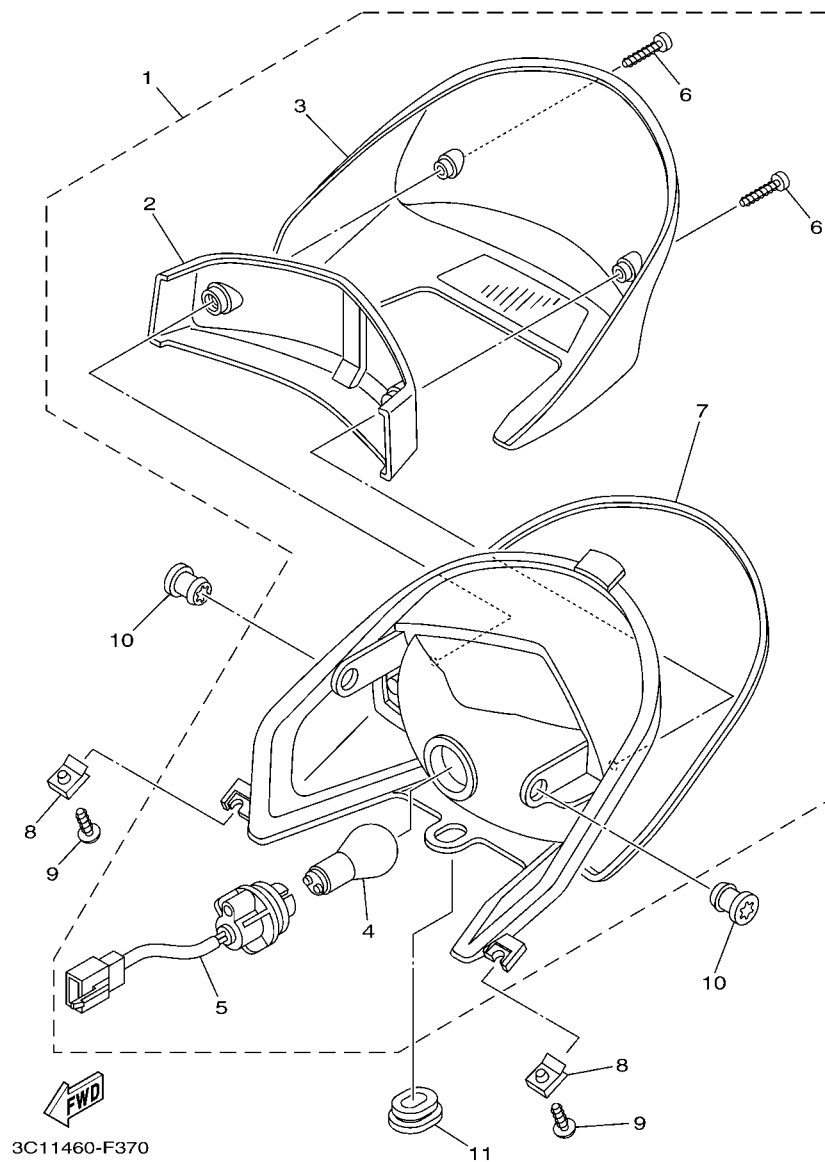
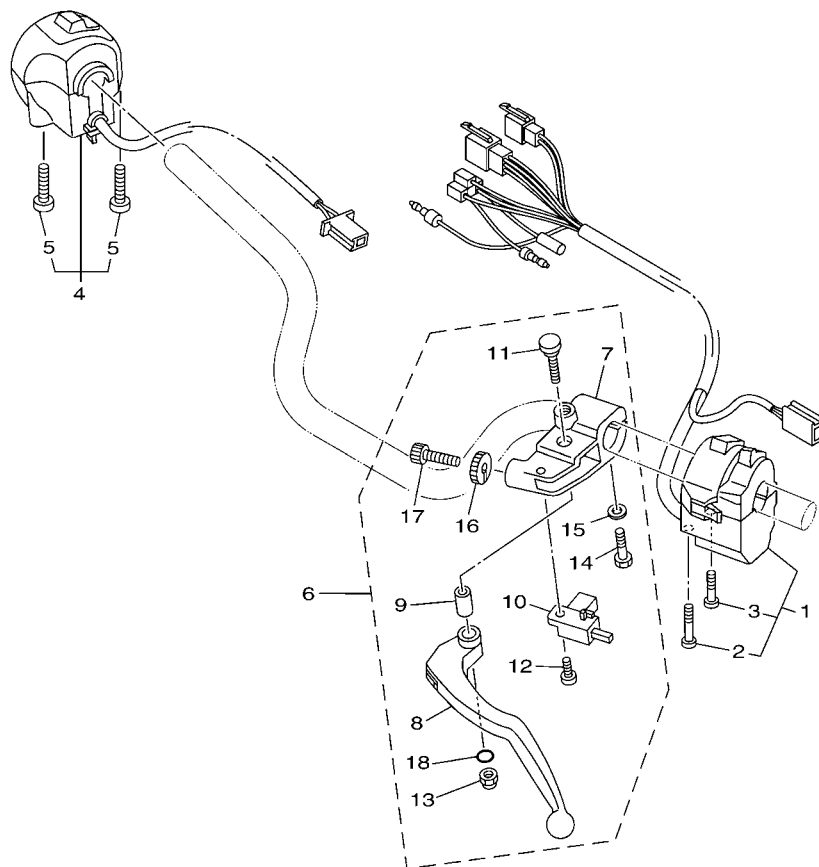


FIG. 37 TAILLIGHT

[illegible]




3C12460-G380

FIG. 38 HANDLE SWITCH & LEVER

REF. NO.	PART NO.	DESCRIPTION	3C14				REMARKS
1	3C1-H3969-00	SWITCH, HANDLE 5	1				
2	9850N-05040	.SCREW, PAN HEAD	1				
3	9850N-05030	.SCREW, PAN HEAD	1				
4	3C1-H3975-00	SWITCH, HANDLE 2	1				
5	3C1-H395W-00	.SCREW, SWITCH FITTING	2				
6	5BP-H2910-10	LEVER HOLDER ASSY (LEFT)	1				
7	3KA-H2911-00	.HOLDER, LEVER 1	1				
8	3KA-H3912-00	.LEVER 1	1				
9	3KA-H3913-00	.COLLAR, LEVER 1	1				
10	5BP-H2917-00	.SWITCH	1				
11	3KA-H3945-00	.BOLT, LEVER	1				
12	98707-03008	.SCREW, FLAT HEAD	1				
13	95602-06100	.NUT, U	1				
14	97007-06025	.BOLT	1				
15	92907-06600	.WASHER, PLATE	1				
16	90179-08148	.NUT	1				
17	90123-08046	.BOLT	1				
18	93210-108H5	.O-RING	1				

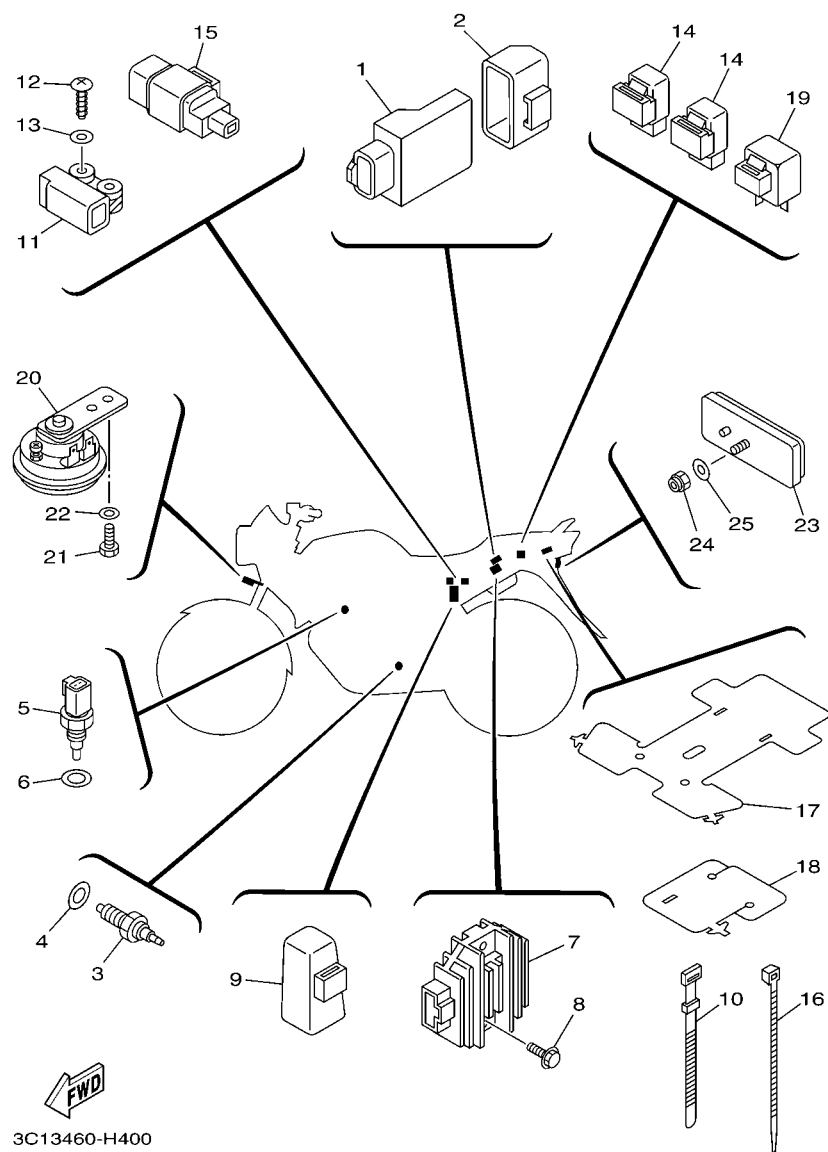


FIG. 40 ELECTRICAL 2

REF. NO.	PART NO.	DESCRIPTION	3C14				REMARKS
1	3C1-H591A-10	ENGINE CONTROL UNIT ASSY	1				
2	3C1-H5546-00	BAND	1				
3	3C1-H2540-00	NEUTRAL SWITCH ASSY	1				
4	90430-10148	GASKET	1				
5	1S7-H5790-00	THERMOSENSOR ASSY	1				
6	90430-12801	GASKET	1				
7	3C1-H1960-00	RECTIFIER & REGULATOR ASSY	1				
8	95807-06020	BOLT, FLANGE	2				
9	5TP-H1940-00	STARTER RELAY ASSY	1				
10	3RS-H3936-00	BAND, SWITCH CORD	2				
11	3C1-H2576-00	SENSOR, LEAN ANGLE	1				
12	97707-40012	SCREW, TAPPING	2				
13	90201-04804	WASHER, PLATE	2				
14	3C1-H1950-00	RELAY ASSY	2				
15	3C1-H1965-00	CONDENSER, SMOOTHING	1				
16	90464-36800	CLAMP	6				
17	3C1-H2599-00	COVER, CONNECTER	1				
18	3C1-H2589-00	PROTECTOR, WIRE HARNESS	1				
19	2D5-H3350-00	FLASHER RELAY ASSY	1				
20	3C1-H3371-00	HORN	1				
21	97007-06012	BOLT	1				
22	92907-06600	WASHER, PLATE	1				
23	3C1-H5130-00	REAR REFLECTOR ASSY	1				
24	95602-05100	NUT, U	1				
25	90201-05725	WASHER, PLATE	1				

NUMERICAL INDEX

PART NO.	REF. NO.	PART NO.	REF. NO.	PART NO.	REF. NO.	PART NO.	REF. NO.	PART NO.	REF. NO.	PART NO.	REF. NO.
3C1-11531-00	2 - 22	5YP-E2126-00	3 - 7	3C1-E4453-00	8 - 21	3C1-E6333-00	14 - 15	3C1-F137P-80	20 - 25	3C1-F1871-00	20 - 7
3C1-11536-00	2 - 15	1S7-E2151-00	3 - 8	3C1-E4485-00	8 - 26	3C1-E6337-00	14 - 16	3C1-F137R-60	20 - 17	3C1-F1875-00	20 - 9
3C1-11603-00	2 - 14	1S7-E2156-00	3 - 14	1S7-E4613-00	9 - 10	3C1-E6344-00	14 - 20	3C1-F137R-70	20 - 17	3C1-F2110-01	21 - 1
3C1-11681-10	2 - 3	5YP-E2157-00	4 - 8	3C1-E4710-00	9 - 1	3C1-E6345-00	14 - 24	3C1-F137R-80	20 - 17	5BP-F2129-00	21 - 4
5YP-12117-00	3 - 6	1S7-E2159-00	3 - 9	3C1-E4728-00	9 - 3	3C1-E6351-00	14 - 14	3C1-F137S-30	20 - 26	3C1-F2141-00	21 - 5
5YP-12411-00	6 - 1		3 - 12	1S7-E4737-00	9 - 5	3C1-E6356-10	14 - 18	3C1-F137S-40	20 - 26	3C1-F2151-00	21 - 7
3C1-13770-10	8 - 9	1S7-E2161-00	3 - 11	5TP-E4747-00	18 - 8	3C1-E6357-10	14 - 25	3C1-F137S-50	20 - 26	3C1-F217A-00	21 - 8
3C1-13971-00	8 - 11	3C1-E2170-00	4 - 1	3C1-E4758-00	9 - 2	3C1-E6358-00	14 - 17	3C1-F137W-00-P3	20 - 15	3C1-F217F-00	21 - 12
5JW-14104-00	8 - 14	2P2-E2210-00	4 - 17	1S7-E482K-00	1 - 8	3C1-E6371-00	14 - 7	3C1-F137X-00-P3	20 - 24	3C1-F2184-00	21 - 3
2S5-1410H-00	8 - 15	5MX-E2213-01	4 - 18	1S7-E4840-00	1 - 9	3C1-E6380-01	14 - 23	3C1-F1511-00-P0	19 - 1	3C1-F2210-01	21 - 18
5CA-14147-00	8 - 10	5YP-E2231-00	4 - 12	3C1-E4877-00	8 - 40	3C1-E6383-00	14 - 9	3C1-F1511-00-P2	19 - 1	3C1-F2311-00	21 - 15
1S4-14216-00	8 - 16	3C1-E2241-00	4 - 13	3C1-E4881-00	8 - 43	3C1-E6384-00	14 - 8	3C1-F1511-00-P3	19 - 1	3C1-F2327-00	18 - 12
3C1-16193-00	14 - 2	3C1-E2256-00	4 - 16	3C1-E4882-00	8 - 36	3C1-E7121-00	15 - 6	4ST-F1518-00	19 - 4	3C1-F3102-10	23 - 1
2N4-23168-00	23 - 13	3C1-E2280-00	4 - 6	3C1-E4883-00	8 - 45	3C1-E7131-00	15 - 5	5BP-F153E-30	20 - 45	3C1-F3103-10	23 - 17
	23 - 29	1S7-E2288-00	4 - 7	1S7-E4890-00	1 - 10	3C1-E7151-00	15 - 2	3C1-F1611-00	19 - 5	3C1-F3110-01	23 - 6
183-23411-00	22 - 2	1S7-E2405-00	6 - 5	3C1-E5150-10	10 - 1	3C1-E7211-00	15 - 12	3C1-F1621-00	19 - 6		23 - 22
183-23412-00	22 - 3	3C1-E240A-10	6 - 4	1S7-E5351-00	7 - 3	3C1-E7221-00	15 - 20	3C1-F1711-00	20 - 1	3C1-F3111-00	23 - 12
5TL-2341E-00	22 - 4	1S7-E2413-00	6 - 2	3C1-E5362-00	11 - 16	3C1-E7231-00	15 - 18	3C1-F171E-00-P2	20 - 44		23 - 28
164-23462-00	23 - 34	3C1-E2422-00	5 - 1	3C1-E5411-00	11 - 1	3C1-E7241-00	15 - 17	3C1-F1721-00	20 - 2	2JK-F3114-00	23 - 11
36Y-2589H-00	30 - 6	1S7-E2428-00	5 - 3	3C1-E5418-00	11 - 9	3C1-E7251-00	15 - 14	3C1-F1731-00-P2	20 - 33		23 - 27
5D7-8183G-00	33 - 3	3C1-E2443-00	5 - 13	3C1-E5421-00	11 - 11	3C1-E7285-00	15 - 19	3C1-F173E-60	20 - 34	3C1-F3118-01	23 - 16
1S7-E1102-00	1 - 1	1S7-E2450-00	5 - 7	3C1-E5441-00	4 - 19	3C1-E7402-00	15 - 11	3C1-F173E-70	20 - 34		23 - 32
1S7-E111F-00	4 - 9	5YP-E2462-00	6 - 8	3C1-E5451-00	11 - 2	3C1-E7411-10	15 - 1	3C1-F173E-80	20 - 34	3C1-F3122-00-P0	22 - 18
1S7-E1133-10	1 - 2	3C1-E2467-00	6 - 14	3C1-E5461-00	11 - 12	3C1-E7456-00	15 - 27	3C1-F173F-60	20 - 38	3C1-F3126-10	23 - 2
3C1-E1166-00	8 - 34	3C1-E2481-00	6 - 15	3C1-E5514-00	13 - 1	3C1-E7471-00	15 - 9	3C1-F173F-70	20 - 38	3C1-F3132-00-P0	22 - 19
3C1-E1181-01	1 - 19	3C1-E2482-00	6 - 17	3C1-E5521-00	13 - 2	3C1-E8101-00	17 - 4	3C1-F173F-80	20 - 38	3C1-F3136-10	23 - 18
1S7-E1185-01	5 - 4	5YP-E2671-00	6 - 7	3C1-E5524-00	13 - 5	3C1-E8110-00	17 - 9	3C1-F1741-00-P2	20 - 37	3C1-F3141-00	23 - 9
1S7-E1191-00	1 - 6	5YP-E2675-00	6 - 6	5YP-E5580-00	13 - 8	5BP-E8112-00	17 - 14	3C1-F1748-00	20 - 20		23 - 25
1S7-E1193-00	1 - 14	3C1-E3300-00	7 - 1	5HV-E5583-00	13 - 9	1EG-E8113-01	17 - 10		20 - 29	5BP-F3144-00	23 - 5
1S7-E1196-00	5 - 5	3C1-E3324-00	7 - 8	3C1-E5598-00	4 - 15	3C1-E8115-00	17 - 11	3C1-F174G-60	20 - 35		23 - 21
3C1-E1311-00	1 - 23	3C1-E3327-00	7 - 13	5YP-E5614-00	13 - 10	3C1-E8119-00	17 - 2	3C1-F174G-70	20 - 35	5BP-F3145-00	23 - 3
1S7-E1351-00	1 - 24	1S7-E3411-00	7 - 4	3C1-E5620-10	12 - 17	3C1-E8140-00	17 - 1	3C1-F174G-80	20 - 35		23 - 19
3C1-E1400-10	2 - 1	1S7-E3440-00	7 - 7	3C1-E5641-00	12 - 2	3C1-E8337-00	17 - 3	3C1-F174H-60	20 - 39	2JK-F3149-01	23 - 15
3C1-E1412-10	2 - 2	3C1-E3447-00	7 - 9	3C1-E5651-00	12 - 12	3C1-E8511-00	16 - 2	3C1-F174H-70	20 - 39		23 - 31
3C1-E1422-10	2 - 6	3C1-E3542-00	8 - 3	3C1-E5661-00	12 - 1	3C1-E8512-00	16 - 3	3C1-F174H-80	20 - 39	22W-F3156-L0	23 - 4
3C1-E1454-10	2 - 21	3C1-E3556-00	8 - 2	3C1-E5666-00	12 - 6	3C1-E8513-00	16 - 4	3C1-F174J-30	20 - 36		23 - 20
3C1-E1496-00	2 - 16	5MX-E3575-01	8 - 17	3C1-E5671-00	12 - 4	3C1-E8531-00	16 - 5	3C1-F174J-40	20 - 36	509-F3158-L0	23 - 10
3C1-E1549-00	2 - 7	3C1-E3585-00	8 - 1	3C1-E5674-00	12 - 15	3C1-E8540-10	16 - 1	3C1-F174J-50	20 - 36		23 - 26
3C1-E1631-10	2 - 11	3C1-E3586-00	8 - 6	3C1-E5767-00	12 - 7	3C1-F1110-10	18 - 1	3C1-F174K-30	20 - 40	3C1-F3170-00	23 - 7
3C1-E1633-00	2 - 12	3C1-E3750-00	8 - 13	3C1-E6111-00	14 - 1	1S7-F117K-00	25 - 14	3C1-F174K-40	20 - 40		23 - 23
3C1-E1651-11	2 - 5	3C1-E3907-10	24 - 17	3C1-E6135-00	14 - 21	3C1-F118E-00	18 - 14	3C1-F174K-50	20 - 40	2JK-F3173-00	23 - 8
1S7-E1951-00	5 - 8	3C1-E4411-00	8 - 18	3C1-E6144-00	14 - 19	3C1-F118W-00	18 - 5	3C1-F179J-00	20 - 18		23 - 24
1S7-E1952-01	5 - 9	3C1-E4412-00	8 - 19	3C1-E6150-00	14 - 5	3C1-F1338-00	18 - 13	3C1-F179J-10	20 - 18	3C1-F3174-21	22 - 16
1S7-E2111-00	3 - 1	3C1-E4419-00	8 - 28	3C1-E6154-00	14 - 6	3C1-F137N-60	20 - 16	3C1-F179J-20	20 - 18	2JK-F3181-00	23 - 14
3C1-E2113-00	3 - 4	3C1-E441J-00	8 - 29	3C1-E6307-00	14 - 10	3C1-F137N-70	20 - 16	3C1-F179K-00	20 - 27		23 - 30
3S0-E2118-00	3 - 5	5TL-E443E-00	8 - 24	3C1-E6321-00	14 - 12	3C1-F137N-80	20 - 16	3C1-F179K-10	20 - 27	3C1-F3340-00	23 - 33
2S6-E2119-00	3 - 3	3C1-E4450-00	8 - 20	3C1-E6324-00	14 - 13	3C1-F137P-60	20 - 25	3C1-F179K-20	20 - 27	2JK-F3346-00	23 - 36
1S7-E2121-00	3 - 2	3C1-E4452-00	8 - 22	3C1-E6331-00	14 - 11	3C1-F137P-70	20 - 25	3C1-F1828-00	20 - 10	5BP-F3416-00	22 - 5

NUMERICAL INDEX

PART NO.	REF. NO.	PART NO.	REF. NO.	PART NO.	REF. NO.	PART NO.	REF. NO.	PART NO.	REF. NO.	PART NO.	REF. NO.
5BP-F3418-00	22 - 8	4ST-F533A-00	28 - 13	3C1-F7413-00	31 - 35	3C1-H333A-00	34 - 3	3C1-H4721-01	37 - 2	90159-06033	25 - 15
3C1-F3435-00	22 - 9	5BP-F5351-00	28 - 9	3C1-F7426-00	31 - 39		34 - 18	3C1-H4724-00	37 - 6	90163-04800	34 - 11
3KA-F3441-10	22 - 13	5BP-F5355-00	28 - 10	3C1-F7431-00	31 - 40	3C1-H3340-00	34 - 16	3C1-H4733-00	37 - 3		34 - 22
3KA-F3469-00	22 - 15	3C1-F5364-00	28 - 4	3C1-F7441-00	31 - 41	3C1-H334A-00	34 - 7	3C1-H4735-00	37 - 5	90163-05803	8 - 23
5BP-F3873-01	22 - 1	3C1-F5366-00-33	28 - 14	5BP-F7451-00	31 - 33		34 - 14	3C1-H5130-00	40 - 23	90170-05302	3 - 10
5BP-F3875-00	23 - 35	3C1-F5371-00	28 - 23	3C1-F7452-00	31 - 25	2D5-H3350-00	40 - 19	3C1-H5546-00	40 - 2		3 - 13
3C1-F4100-60-P0	24 - 1	3C1-F5381-00	28 - 28	5BP-F7461-00	31 - 34	3C1-H3371-00	40 - 20	1S7-H5790-00	40 - 5	90170-10012	2 - 30
3C1-F4100-70-P0	24 - 1	3C1-F5383-00	28 - 29	3C1-F7462-00	31 - 31	3C1-H3500-01	35 - 1	3C1-H591A-10	40 - 1	90175-06013	31 - 24
3C1-F4100-80-P0	24 - 1	3C1-F5386-00	28 - 30	3C1-F8100-00	18 - 15	3C1-H3511-00	35 - 3	5P0-W0041-00	30 - 3	90176-06019	36 - 16
3C1-F411F-00	24 - 7	3C1-F5388-00	28 - 32	3C1-H1410-11	32 - 2	5HH-H3517-00	35 - 10	3C1-W0045-10	27 - 12	90179-08148	38 - 16
3C1-F416B-00	24 - 21	3C1-F5389-00	28 - 33	3C1-H1450-10	32 - 1	3C1-H3518-00	35 - 8	3C1-W0047-00	27 - 5	90179-10805	18 - 4
3C1-F417B-00	24 - 22	3C1-F5442-00	28 - 18	5D7-H1800-00	33 - 1	3C1-H3518-10	35 - 9	4C9-W0048-00	27 - 6		21 - 13
3C1-F4188-00	24 - 15	3C1-F580U-10	27 - 3	3AY-H1801-00	33 - 2	3C1-H353A-00	35 - 4	3C1-W0057-00	27 - 4	90179-12802	12 - 18
3C1-F4191-00	24 - 6	3C1-F582U-00	27 - 1	3AY-H1828-00	33 - 5	3C1-H353G-00	35 - 2	5BP-WF253-10	28 - 6		14 - 4
3C1-F4244-60	24 - 2	3C1-F583T-02	30 - 2	3AY-H182M-00	33 - 4	3C1-H3550-00	35 - 23	3C1-XH250-02	39 - 10	90179-14001	14 - 22
3C1-F4244-70	24 - 2	3C1-F5852-00	30 - 5	5TP-H1940-00	40 - 9	3C1-H355H-00	35 - 7	90101-06278	28 - 11	90179-25615	22 - 6
3C1-F4244-80	24 - 2	3RW-F5854-00	30 - 4	3C1-H1950-00	40 - 14	3C1-H356C-00	35 - 13	90105-08850	1 - 16	90183-05807	19 - 9
3C1-F4245-60	24 - 3	3C1-F5855-00	30 - 8	3C1-H1960-00	40 - 7	3C1-H356F-00	35 - 14	90105-10006	22 - 11		36 - 6
3C1-F4245-70	24 - 3	3RW-F5867-00	30 - 7	3C1-H1965-00	40 - 15	3C1-H3578-00	35 - 12	90105-10323	18 - 2		37 - 8
3C1-F4245-80	24 - 3	3C1-F5872-00	30 - 1	3C1-H2100-00	39 - 4	3C1-H357K-00	35 - 6	90105-106A7	31 - 3	90183-06802	8 - 32
3C1-F4246-00	24 - 4	3C1-F5886-01	30 - 16	3C1-H2116-00	39 - 9	3C1-H357L-00	35 - 17	90105-10826	21 - 11	90201-04804	40 - 13
3C1-F4246-10	24 - 4	5YP-F5917-00	27 - 8	3C1-H2121-00	39 - 5	3C1-H3595-00	35 - 18	90105-10829	18 - 3	90201-05725	40 - 25
3C1-F4246-20	24 - 4	5P0-F5919-00	27 - 10	3C1-H2131-00	39 - 6	3C1-H359E-00	35 - 5	90109-06183	19 - 8	90201-05817	9 - 9
3C1-F4247-00	24 - 5	5YP-F5924-00	27 - 11	5TL-H2131-00	25 - 6	3KA-H3912-00	38 - 8		20 - 8	90201-06072	6 - 11
3C1-F4247-10	24 - 5	5YP-F5925-01	27 - 9	3C1-H2150-00	39 - 7	3KA-H3913-00	38 - 9	90109-063F1	19 - 7	90201-06380	36 - 15
3C1-F4247-20	24 - 5	5YP-F5937-00	27 - 7	3C1-H2151-00	39 - 8	3C1-H3922-00	30 - 9	90109-06577	30 - 10	90201-06830	35 - 22
3C1-F4486-00	24 - 19	5YP-F5939-00	27 - 13	3C1-H2310-00	39 - 1	3RS-H3936-00	40 - 10	90109-08063	28 - 24	90201-08609	1 - 17
3C1-F4491-10	24 - 18	3C1-F6111-00	29 - 1	1S7-H2370-00	39 - 3	3KA-H3945-00	38 - 11	90109-08825	28 - 25	90201-08612	9 - 13
3C1-F4610-00	24 - 16	3C1-F6240-00	29 - 2	3C1-H2530-01	39 - 12	3C1-H395W-00	38 - 5	90110-08803	31 - 30	90201-10118	30 - 15
3C1-F4728-00	25 - 3	4NS-F6241-10	29 - 6	3C1-H2540-00	40 - 3	3C1-H3969-00	38 - 1		31 - 32	90201-105E8	13 - 3
3C1-F4730-10	25 - 1	4NS-F6242-10	29 - 3	3C1-H2576-00	40 - 11	3C1-H3975-00	38 - 4	90110-10801	31 - 27	90201-12019	14 - 3
3C1-F4731-00	25 - 2	3C1-F6243-00	29 - 4	3C1-H2589-00	40 - 18	5BP-H3980-10	30 - 12	90111-08815	27 - 2		32 - 6
3C1-F4741-00	25 - 5	5ER-F6246-00	29 - 7	3C1-H2590-10	39 - 13	3C1-H4111-10	36 - 8	90116-08812	28 - 19	90201-15821	2 - 17
3C1-F4773-00-7B	25 - 11	5MX-F6280-00	29 - 14	3C1-H2599-00	40 - 17	3C1-H411V-00	35 - 19	90119-06044	19 - 2	90201-163H8	31 - 10
5BP-F4780-00	25 - 7	5MX-F6290-00	29 - 15	5BP-H2910-10	38 - 6	3C1-H4130-20	36 - 7		20 - 3	90201-173F4	15 - 22
3C1-F478E-00	25 - 10	3C1-F6311-00	29 - 9	3KA-H2911-00	38 - 7	3C1-H4145-20	36 - 10		20 - 41	90201-173U5	31 - 29
5BP-F4792-00	25 - 8	3C1-F6335-00	29 - 12	5BP-H2917-00	38 - 10	3C1-H4150-00	36 - 4		20 - 46	90201-175F6	12 - 13
3C1-F4799-00	25 - 13	3RS-F6372-00	29 - 13	3C1-H3310-00	34 - 1	3C1-H4154-00	36 - 11	90119-06051	8 - 33	90201-19800	12 - 11
3C1-F510C-00	26 - 2	3C1-F6393-00	29 - 10	5LL-H3311-00	34 - 2	3C1-H4163-10	36 - 9	90119-06877	24 - 10	90201-20685	12 - 8
3C1-F5168-00	26 - 1	3C1-F7111-00	31 - 8		34 - 6	3C1-H4310-21	36 - 1	90123-08046	38 - 17	90201-20814	15 - 21
3C1-F5168-10	26 - 1	3C1-F7112-00	31 - 9		34 - 13	5B9-H4314-00	36 - 2	90149-06821	20 - 21	90201-20815	12 - 3
3C1-F5181-00	26 - 10	4YY-F7114-00	9 - 4		34 - 17	3C1-H4325-10	36 - 13		20 - 30	90201-25290	13 - 7
3C1-F5186-00	26 - 9	3C1-F7211-00	31 - 14	3C1-H3318-00	34 - 9	3C1-H4347-00	36 - 3		22 - 21	90201-261L1	29 - 5
3C1-F5190-01	26 - 8	3C1-F7216-00	31 - 17		34 - 20	3C1-H4396-00	36 - 5	90149-06829	4 - 14	90202-26142	22 - 7
5BP-F530S-00	28 - 2	3C1-F7231-00	31 - 18	3KA-H331L-00	34 - 10	3C1-H4526-10	36 - 12	90149-10802	27 - 14	90206-17084	31 - 28
5BP-F5321-01-33	28 - 5	3C1-F7262-00	31 - 15		34 - 21	3C1-H4704-00	37 - 7	90153-06803	1 - 3	90208-20003	14 - 30
3C1-F5338-00	28 - 1	3C1-F7311-00	31 - 1	3C1-H3320-00	34 - 5	3C1-H4710-03	37 - 1		1 - 25	90209-10020	22 - 12
3C1-F5338-10	28 - 1	5BP-F7411-00	31 - 26	3C1-H3330-00	34 - 12	3C1-H4714-00	37 - 4	90157-05079	31 - 36	90209-17285	15 - 3

NUMERICAL INDEX

PART NO.	REF. NO.	PART NO.	REF. NO.	PART NO.	REF. NO.	PART NO.	REF. NO.	PART NO.	REF. NO.	PART NO.	REF. NO.
90209-18208	15 - 15	90464-36800	40 - 16	91401-20012	31 - 21	93306-252X7	28 - 3	9502L-06020	7 - 10	97706-04012	34 - 8
90214-10800	2 - 18	90467-08003	20 - 13	91401-25015	31 - 44	93306-252Y9	2 - 26	9502L-06040	10 - 6		34 - 15
90215-10284	2 - 29	90467-08092	8 - 4	91401-30030	31 - 11	93306-252YL	15 - 8		11 - 4		34 - 19
90240-08144	31 - 38	90467-10805	6 - 20	91701-06018	31 - 19	93306-301XE	26 - 3		11 - 14	97707-40012	40 - 12
90240-08145	31 - 37	90467-12800	8 - 25	91810-14809	1 - 20	93306-305X7	2 - 9	9502L-06045	10 - 4	97707-50014	20 - 6
90249-12008	31 - 23	90467-13064	8 - 35		1 - 21	93306-305YF	2 - 8	9502L-06050	11 - 15		20 - 42
90280-03017	2 - 10	90467-13802	8 - 38		10 - 2	93306-906Y4	4 - 2	9502L-06055	10 - 3		37 - 9
90282-05031	2 - 28	90467-15012	8 - 37		11 - 3	93310-325X1	13 - 6	9502L-06070	10 - 5	9770M-40010	35 - 11
90338-15802	18 - 9	90467-16800	8 - 46		11 - 13	93310-528YD	2 - 4	9502L-06080	7 - 11	98507-05016	29 - 11
90338-16008	8 - 30	90467-20050	8 - 27	91811-10005	1 - 7	93315-112Y8	14 - 27	9502L-06090	11 - 19	98507-05025	7 - 2
90338-16148	18 - 11	90467-23801	8 - 31	92012-05016	24 - 20	93315-317Y1	21 - 9	9502N-06020	8 - 8	9850N-05030	38 - 3
90338-18122	18 - 10	90480-01558	20 - 5	92907-06200	17 - 12	93317-218Y1	21 - 2	95307-06600	28 - 12	9850N-05040	38 - 2
90340-14805	11 - 5		20 - 43	92907-06600	31 - 20	93410-20038	12 - 9	9530N-03600	35 - 16	98517-06012	15 - 10
90340-32810	11 - 7		37 - 11		38 - 15		15 - 4	95602-05100	40 - 24	98707-03008	38 - 12
90387-062M9	19 - 3	90480-01803	6 - 13		40 - 22	93410-22039	15 - 16	95602-06100	30 - 11	98707-06035	29 - 8
90387-064V3	6 - 12	90480-10623	20 - 23	92907-10600	31 - 5	93450-16115	2 - 13		38 - 13	9890L-04008	35 - 15
90387-06890	24 - 14		20 - 32	92990-06600	9 - 7	93501-04830	31 - 43	95602-08200	28 - 20	98980-06010	9 - 6
90387-06892	24 - 8	90480-10801	35 - 21	93101-10843	11 - 18	93505-16844	14 - 26	95602-12200	26 - 11	99001-10600	17 - 6
90387-06897	20 - 19	90480-12320	20 - 22	93102-12862	14 - 28	93604-08800	2 - 20	95602-14200	28 - 31	99009-10400	13 - 4
	20 - 28		20 - 31	93102-12891	17 - 8	93605-06800	4 - 5	95612-10100	31 - 6	99009-17400	12 - 14
	22 - 20	90480-13567	20 - 4	93102-20892	15 - 25	93608-30839	17 - 7	95617-08620	1 - 5	99009-19400	12 - 10
90387-068S1	8 - 41	90480-13810	37 - 10	93103-10801	5 - 2	93822-14815	15 - 26	95707-06500	25 - 9	99009-20500	14 - 29
90387-08813	18 - 7	90480-15363	6 - 9	93106-17801	21 - 14	94109-17801	28 - 21	95707-08500	9 - 11		
90387-09803	21 - 16	90480-15483	24 - 9	93106-20814	26 - 4	94109-17802	28 - 21		28 - 26		
90387-10003	31 - 4	90480-18549	24 - 12	93106-26815	28 - 16	94127-17805	26 - 6	95707-12500	32 - 5		
90387-10814	21 - 10	90501-030A0	13 - 11	93109-20800	12 - 19	94127-17806	26 - 6	9570L-06500	25 - 4		
90387-15810	2 - 23	90501-06800	16 - 6	93210-09806	4 - 3	94218-17800	28 - 22	9570L-12500	21 - 6		
90387-158V4	28 - 17	90501-10245	31 - 22	93210-108H5	38 - 18	94227-17803	26 - 7	9570M-06500	35 - 20		
90387-17804	15 - 13	90501-12743	31 - 42	93210-11803	1 - 15	94227-17805	26 - 7	95807-06020	40 - 8		
90387-22660	29 - 16	90501-16800	2 - 19	93210-11805	2 - 24		28 - 22	95812-06010	36 - 18		
90401-10812	30 - 14	90501-18576	7 - 5	93210-13803	2 - 25	94568-B3096	4 - 11	95817-06016	39 - 11		
90413-13800	8 - 44	90506-12001	28 - 7	93210-148F8	11 - 6	94568-E0079	28 - 34	95817-06025	36 - 14		
90430-06014	1 - 4	90506-15001	28 - 8	93210-19809	5 - 16	94700-00872	1 - 18	95817-06030	8 - 12		
	1 - 13	90506-28800	31 - 2	93210-198F9	11 - 17	94700-00873	1 - 18	95817-08025	9 - 12		
	1 - 26	90506-35003	31 - 12	93210-26805	33 - 6	95027-06010	4 - 10	95817-08040	9 - 14		
90430-09800	8 - 5	90508-26803	12 - 5	93210-32807	8 - 7		15 - 28	9581L-08020	18 - 6		
90430-10148	40 - 4	90508-32837	17 - 5	93210-328G3	11 - 8	95027-06012	5 - 12	95827-06014	21 - 17		
90430-12801	40 - 6	91317-06016	12 - 16	93210-34802	7 - 6		22 - 17	95827-06025	6 - 10		
90445-08831	20 - 11		32 - 4	93210-54805	7 - 12	95027-06014	1 - 11	95827-06030	24 - 13		
90445-08832	20 - 12	91317-06020	4 - 20	93210-84801	5 - 6	95027-06016	30 - 17	95827-08020	25 - 12		
90445-12804	6 - 19		13 - 12	93306-000Y3	5 - 10	95027-06020	1 - 12	9582L-06016	24 - 11		
90445-21848	31 - 7		31 - 16	93306-001X6	4 - 4		6 - 3	97007-06012	40 - 21		
	31 - 13	91317-06025	32 - 3	93306-003Y7	15 - 23	95027-06025	5 - 11	97007-06016	39 - 2		
90450-27803	6 - 16	91317-06100	1 - 22	93306-004XR	15 - 7		5 - 14	97007-06025	38 - 14		
	6 - 18	91317-08030	22 - 14	93306-004XV	28 - 15		30 - 13	97024-06020	17 - 15		
90450-39802	8 - 39	9131L-08030	22 - 10	93306-201XA	26 - 5	95027-06050	5 - 15	97027-06014	8 - 42		
90462-08812	36 - 17	91401-20012	17 - 13	93306-203XK	2 - 27	9502L-06012	7 - 14	97080-06008	9 - 8		
90464-14807	20 - 14		28 - 27	93306-204YS	15 - 24	9502L-06016	11 - 10	97706-04012	34 - 4		